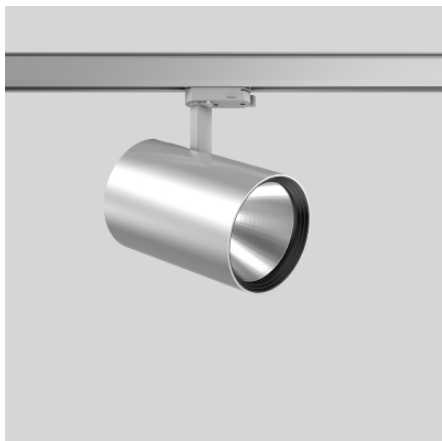


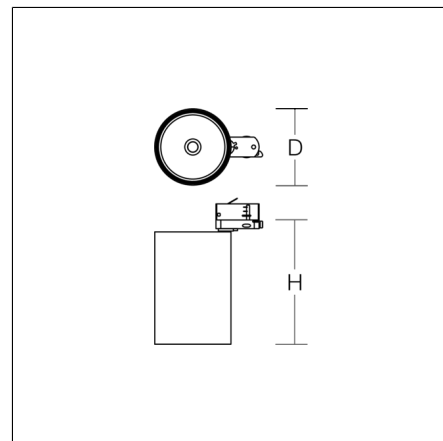
DEECOS S maxi

742221.004.2 | Surface mounted projector



Surface mounted projectors
4051859852087
D 123, H 200

Track on ceiling, Wall track
silver



LED surface-mounted projector in modern design with no visible cooling ribs. Housing: die-cast aluminium, powder-coated. Rotation range: 356°. Swivel range: 90°. Black plastic ring and recessed LED to prevent glare from the side. Optical assembly with reflector made of MIRO-Silver with 98% total light reflection for outstanding efficiency - can be changed without tools. Best colour rendering index Ra>90. With multi adaptor for 3-circuit tracks 230 V. Suitable for Track on ceiling, Wall track. High quality converter without flickering and stroboscopic effect. The following accessories can be mounted without use of tools: interchangeable lenses, decorative glasses, honeycomb louvre, clear and frosted diffusers, white interchangeable plastic ring.

Product specifications

Diameter D	123 mm
Height H	200 mm
Weight	1.46 kg
Light source	LED
Colour temperature	2700 K
Rated luminous flux	4100 lm
System power	35 W
System efficiency	117 lm/W
Glare evaluation UGR (4H 8H)	14,1
Beam angle	21°
Rated life	50000 h (L90/B10)
Colour rendering index (CRI)	92
Colour tolerance	2
Photobiological safety according to EN 62471	Risk group 1
Driver	Converter
Control	on/off
Voltage	220 - 240 V / 50 Hz, 60 Hz
Luminaires on B10A fuse	21
Luminaires on B16A fuse	34
Luminaires on C10A fuse	35
Luminaires on C16A fuse	57
Inrush current / Inrush current duration	12.6 A / 250 µs
CIE Flux Code / CEN Flux Code	100 100 100 100 100
Type of protection	IP 20
Protection class	I
Filament test	650 °C
Impact resistance	IK06
Ambient temperature	-20 °C ... + 25 °C
Conformity mark	CE, EAC

DEECOS S maxi

742221.004.2 | Surface mounted projector



Accessories



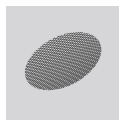
982373.003
Spot lens



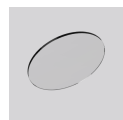
982373.013
Medium lens



982373.023
Flood lens



982375.003
Anti-glare honeycomb louvre



982374.000
Diffuser, transparent



982374.010
Diffuser, satinated



982422.002
White plastic ring for lens.



982372.003
Reflector spot



982372.013
Reflector medium



982372.023
Reflector flood



982372.033
Reflector wide flood



982420.002
White plastic ring for reflector.



982649.002
Decorative glass opal matt



982650.002
Decorative glass opal matt



70319.009
Point outlet for 3-circuit multi adaptor