



⚠ ⚠ DANGER / 危险

HAZARD OF ELECTRIC SHOCK, EXPLOSION, OR ARC FLASH

Disconnect all power before servicing equipment.

Failure to follow these instructions will result in death or serious injury.

电击、爆炸或弧闪的危险

在此电力设备上工作时, 请先切断所有电源。

不遵循上述规定将可能导致人员伤亡。

⚠ ⚠ WARNING / 警告

RISK OF FIRE OR ELECTRIC SHOCK (FOR CONTACTOR WITH UL HI-FAULT SHORT CIRCUIT CURRENT RATINGS ONLY)

- The opening of the branch-circuit protective device may be an indication that a fault current has been interrupted.
- To reduce the risk of fire or electric shock, current-carrying parts and the other components of the controller should be examined and replaced if damaged.

Failure to follow these instructions can result in death, serious injury, or equipment damage.

可能有火灾或者触电的危险 (仅限UL高故障短路电流额定值的接触器)

- 支路保护设备断开, 表明故障电流已被中断。
 - 为降低火灾或触电风险, 应检查带电部件和其他控制元件, 如有损坏, 需及时更换。
- 不遵循上述说明可能导致人员伤亡或设备损坏。

"For motor starting use Schneider Electric TeSys Protect - Deca overload relays."

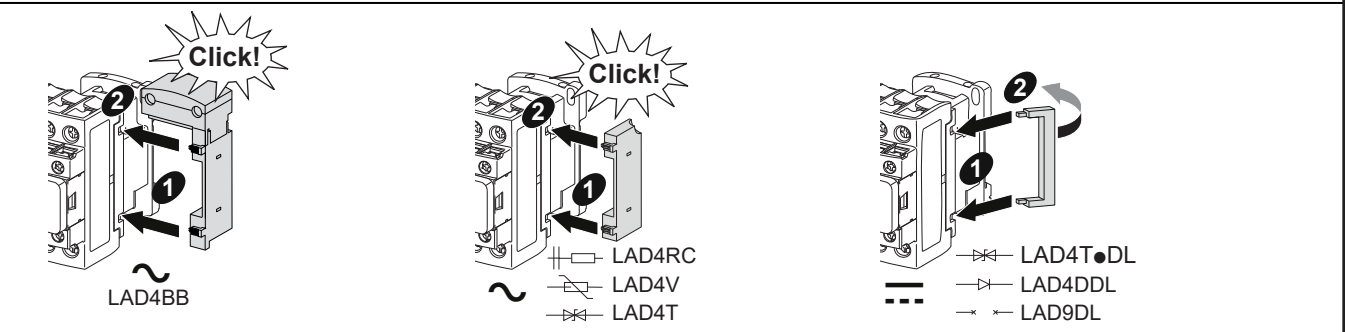
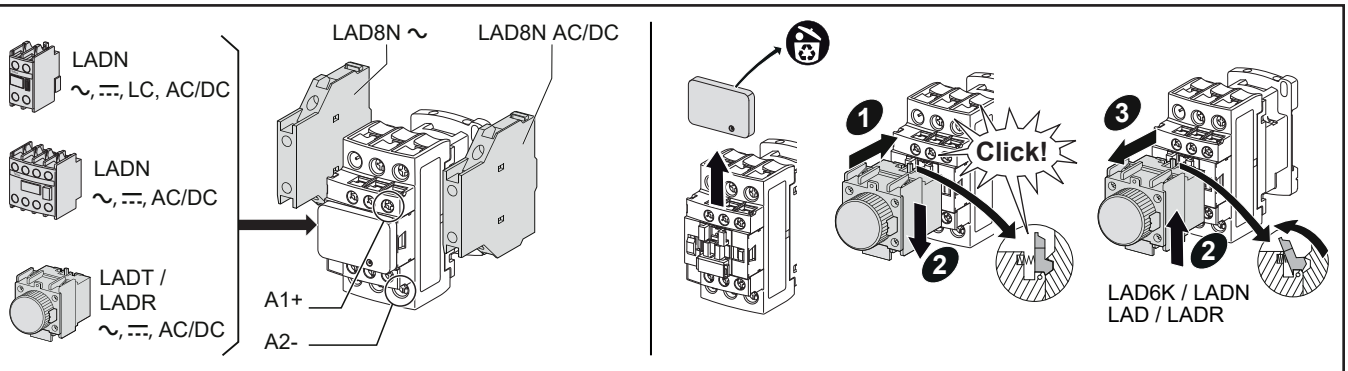
电动机启动请使用施耐德电气TeSys保护Deca系列热过载继电器。

3P AC TeSys Deca contactors are grade 3 (LC1D09 -> LC1D18) and grade 2 (LC1D25 -> LC1D38) according to GB 21518.

Maximum power consumption lower than 9.5 VA.

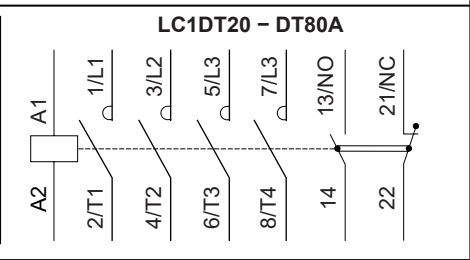
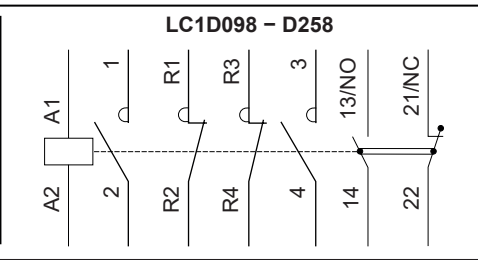
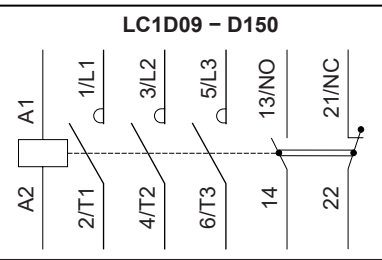
根据GB 21518标准, 三相TeSys Deca 系列交流接触器能效等级为3级 (LC1D09 -> LC1D18)和2级 (LC1D25 -> LC1D38),




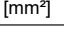
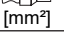

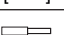
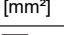
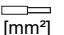
产品最大吸持 功率低于9.5 VA



AC/DC

- use of this product in EMC environment B may require mitigation measures to avoid unwanted disturbance.
- full open AC at 10%Us.
- 在EMC环境B中使用 此产品可能需要采取缓解 措施以避免不必要的干扰。
- 交流情况需在10%Us下完全释放。



	d					l
$\frac{\text{mm}}{\text{in.}}$	LC1D09/D12	LC1DT20/DT25/ D098/D128	LC1D18	LC1D25/D32/D38/ T02AN13/T02BN13/ T02CN13	LC1DT32/DT40/ D188/D258	LC1D●●/LA●●/ T02AN13/T02BN13/ T02CN13
	8 mm 5/16"	12 mm 6/13"	8 mm 5/16"	10 mm 3/8"	12 mm 6/13"	8 mm 5/16"
 [mm ²]	1...4	1...4	1.5...6	2.5...10	2.5...10	1...4
 [mm ²]	1...4	1...4	1.5...6	2.5...10	2.5...10	1...4
 [mm ²]	1...4	1...4	1...6	1...10	2.5...10	1...4
 [mm ²]	1...2.5	1...2.5	1...4	1.5...6	2.5...10	1...2.5
 [mm ²]	1...4	1...4	1.5...6	1.5...10	2.5...16	1...4
 [mm ²]	1...4	1...4	1.5...6	2.5...10	2.5...16	1...4
AWG	10-18 Cu 75°C	10-18 Cu 75°C	8-18 Cu 75°C	6-14 Cu 75°C	8-12 Cu 75°C	10-18 Cu 75°C
	6 mm	6 mm	6 mm	6 mm	6 mm	6 mm
 C	1.7 N.m 15 lb-in	1.7 N.m 15 lb-in	1.7 N.m 15 lb-in	2.5 N.m 22 lb-in	1.8 N.m 16 lb-in	1.7 N.m 15 lb-in

UL/CSA Lighting Ratings / UL/CSA 照明电流额定值

Device / 设备	Ballast, 600 V / 镇流器	Tungsten, 480 V / 277 V 钨丝灯
LC1D09	20 A	20 A
LC1D12	25 A	25 A CSA only
LC1D18	32 A	25 A
LC1D25/T02AN13/T02BN13	40 A	40 A
LC1D32 / T02CN13	50 A	50 A
LC1DT20	20 A	20 A
LC1DT25	25 A	25 A CSA only
LC1DT32	32 A	25 A
LC1DT40	40 A	40 A

Only applicable for UL/CSA marked products except DC coil.

Definite Purpose ratings, 3 Phase, Load wiring: breaking all lines Hermetic refrigeration compressor 特定用途额定值, 3相, 断开所有线路 封闭式制冷压缩机设备

Device / 设备	FLA	LRA		
		240 V	480 V	600 V
LC1D09	9	54	45	36
LC1D12	12	72	60	48
LC1D18	18	108	90	72
LC1D25/T02AN13/T02BN13	25	150	125	100
LC1D32/T02CN13	32	192	160	128

Elevator Duty HP ratings / 电梯专用马力 (HP) 额定值

	One Phase / 单相	Three Phases / 三相			
	230 V	200/208 V	230 V	460 V	575 V
LC1D12	1.5	2	3	7.5	7.5
LC1D18	3	5	5	-	-
LC1D25/ T02AN13/ T02BN13	3	5	7.5	15	20
LC1D32/ T02CN13	5	10	7.5	-	-

Schneider Electric Industries SAS
35, rue Joseph Monier
CS30323
F - 92500 Rueil-Malmaison
www.se.com

Schneider Electric Limited
Stafford Park 5
Telford, TF3 3BL
United Kingdom
www.se.com/uk

**UK
CA**