



CorePro LED PLL



CorePro LED PLL EM/Mains 12W 840 4P

Philips CorePro LED PLL is the ideal uplamping solution for downlights & luminaires in a wide range of general lighting applications. It integrates a LED light source into a traditional fluorescent form factor to offer superb energy savings over a lifetime that's twice as long as fluorescent alternatives.

Product data

General Information	
Cap-Base	2G11
Nominal lifetime	30,000 hour(s)
Switching Cycle	200,000
Lighting Technology	LED
Flux measurement reference	Sphere
Light Technical	
Color Code	840 [CCT of 4000K]
Beam Angle (Nom)	160 degree(s)
Luminous Flux	1,500 lm
Color Designation	Cool White (CW)
Correlated Color Temperature (Nom)	4000 K
Luminous Efficacy (rated) (Nom)	125 lm/W
Color Consistency	<6
Color rendering index (CRI)	80
LLMF At End Of Nominal Lifetime (Nom)	70 %
Photobiological safety according to EN 62471	RG0
Operating and Electrical	
Line Frequency	50 to 60 Hz
Input Frequency	50 to 60 Hz
Power Consumption	12 W

Lamp Current (Nom)	60 mA
Starting Time (Nom)	0.5 s
Warm-up time to 60% light	0.5 s
Power Factor (Fraction)	0.9
Voltage (Nom)	220-240 V
Ballast Compatibility	EM
LED alternative to fluorescent lamp power	24 W
Inrush current at mains	8
Max. lamp no. on MCB B type 10A - Mains	90
Max. lamp no. on MCB B type 10A – EM ballast without Compensation Capacitor.	105
Max. lamp no. on MCB B type 10A – EM ballast with Compensation Capacitor.	15
Max. lamp no. on MCB B type 16A - Mains	150
Max. lamp no. on MCB B type 16A – EM ballast without Compensation Capacitor.	170
Max. lamp no. on MCB B type 16A – EM ballast with Compensation Capacitor.	25

Temperature	
T-Case Maximum (Nom)	70 °C

CorePro LED PLL

Controls and Dimming

Dimmable	No
----------	----

Mechanical and Housing

Bulb Finish	Frosted
Bulb Material	Glass
Product Length	312 mm
Bulb Shape	PL-L
Net Weight (Piece)	0.113 kg

Approval and Application

Energy Efficiency Class	E
Energy Saving Product	Yes
Approval Marks	RoHS compliance KEMA Keur certificate
Energy Consumption kWh/1000 h	12 kWh
EPREL Registration Number	1370826
CE mark	Yes
EU RoHS compliant	Yes

Flickering value (PstLM) - Flickering value as per EN 61000-3-3	1
---	---

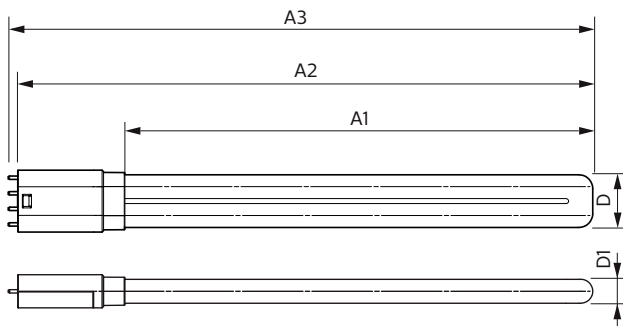
Stroboscopic effect visibility measure (SVM)	0.4
--	-----

Ambient temperature range	-20 °C to 45 °C
---------------------------	-----------------

Product Data

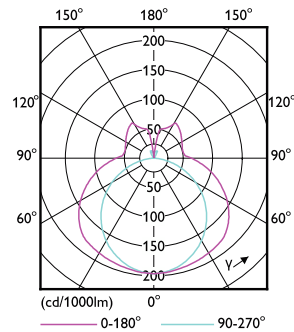
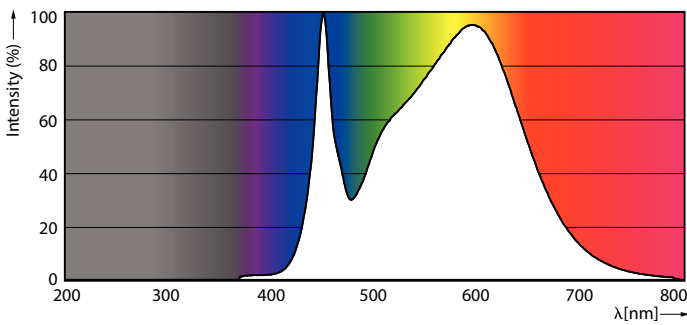
Order product name	CorePro LED PLL EM/Mains 12W 840 4P
Full product name	CorePro LED PLL EM/Mains 12W 840 4P
Full product code	872016915705700
Order code	929003592502
Material Nr. (12NC)	929003592502
Numerator - Quantity Per Pack	1
EAN/UPC - Product/Case	8720169157057
Numerator - Packs per outer box	10
EAN/UPC - Case	8720169157064

Dimensional drawing



Product	D1	D2	A1	A2	A3
CorePro LED PLL EM/Mains 12W 840 4P	17 mm	38 mm	250 mm	312 mm	319 mm

Photometric data

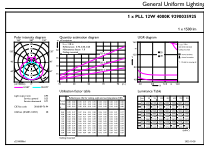


Spectral Power Distribution Colour - CorePro LED PLL EM/Mains 12W 840 4P

Light Distribution Diagram - CorePro LED PLL EM/Mains 12W 840 4P

CorePro LED PLL

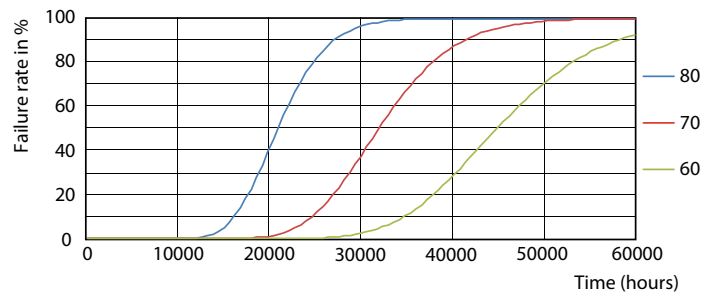
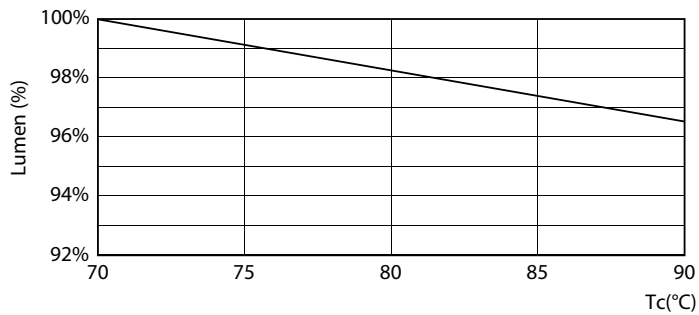
Photometric data



General Parameters 43
Photometric Data
Page 17

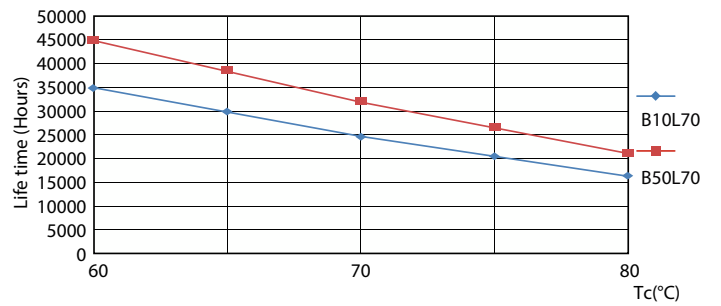
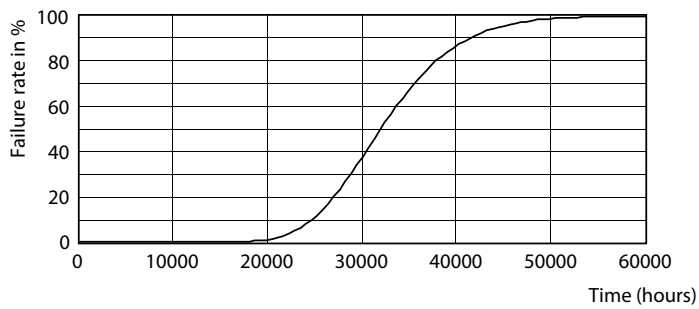
General uniform lighting - CorePro LED PLL EM/Mains 12W 840 4P

Lifetime



Lumen Maintenance Diagram - CorePro LED PLL EM/Mains 12W 840 4P

FailureRate

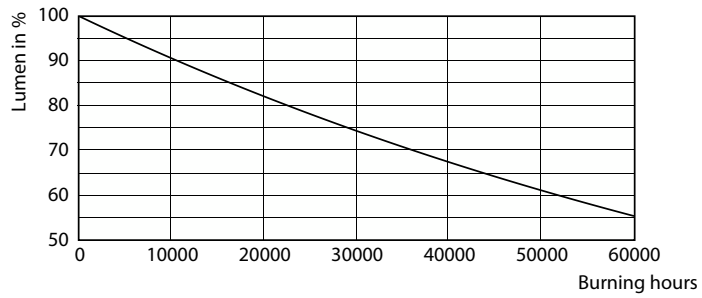


Life Expectancy Diagram

LifetimeVsTc

CorePro LED PLL

Lifetime



Lumen Maintenance Diagram - CorePro LED PLL EM/Mains 12W 840 4P

