

CorePro LED tube Universal T8



CorePro LEDtube UN 1500mm UO 23W865 T8

The new Philips CorePro LEDtube Universal T8 brings simplicity to your lighting project. You don't need to pay attention to the driver technology anymore. Thanks to a unique design, Philips CorePro LEDtube Universal T8 directly fits in luminaires operating either on Electro Magnetic ballasts or HF Electronic ballasts or mains power connection. So simple to operate and no need to carry double stock of products! Perfectly safe, reliable & easy to install Philips CorePro LEDtube Universal T8 is the ideal alternative to standard fluorescent tubes to save energy and lower investment.

Product data

General Information	
Cap-Base	G13 [Medium Bi-Pin Fluorescent]
Nominal lifetime	50,000 hour(s)
Switching Cycle	50,000
Lighting Technology	LED
Flux measurement reference	Sphere
Light Technical	
Color Code	865 [CCT of 6500K]
Beam Angle (Nom)	240 degree(s)
Luminous Flux	3,500 lm
Color Designation	Cool Daylight
Correlated Color Temperature (Nom)	6500 K
Luminous Efficacy (rated) (Nom)	152 lm/W
Color Consistency	<6
Color rendering index (CRI)	80
LLMF At End Of Nominal Lifetime (Nom)	70 %

Photobiological safety according to EN 62471	RG0
Operating and Electrical	
Line Frequency	50 to 60 Hz
Input Frequency	50 to 60 Hz
Power Consumption	23 W
Lamp Current (Max)	106 mA
Lamp Current (Min)	106 mA
Lamp Current (Nom)	106 mA
Starting Time (Nom)	0.5 s
Warm-up time to 60% light	0.5 s
Power Factor (Fraction)	0.9
Voltage (Nom)	220-240 V
Ballast Compatibility	Universal
LED alternative to fluorescent lamp power	58 W
Inrush current at mains	10.4
Max. lamp no. on MCB B type 10A - Mains	73

CorePro LED tube Universal T8

Max. lamp no. on MCB B type 10A – EM ballast without Compensation Capacitor.	73
Max. lamp no. on MCB B type 10A – EM ballast with Compensation Capacitor.	15
Max. lamp no. on MCB B type 16A – Mains	116
Max. lamp no. on MCB B type 16A – EM ballast without Compensation Capacitor.	116
Max. lamp no. on MCB B type 16A – EM ballast with Compensation Capacitor.	25

Temperature

T-Case Maximum (Nom)	55 °C
----------------------	-------

Controls and Dimming

Dimmable	No
----------	----

Mechanical and Housing

Bulb Finish	Frosted
Bulb Material	Glass
Product Length	1,500 mm
Bulb Shape	T8
Net Weight (Piece)	0.255 kg

Approval and Application

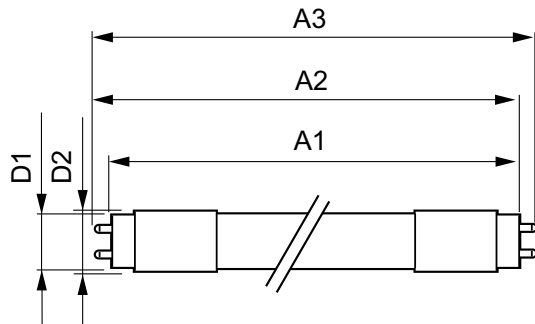
Energy Efficiency Class	D
-------------------------	---

Energy Saving Product	Yes
Approval Marks	RoHS compliance
Energy Consumption kWh/1000 h	23 kWh
EPREL Registration Number	1552698
CE mark	Yes
EU RoHS compliant	Yes
Flickering value (PstLM) – Flickering value as per EN 61000-3-3	1
Stroboscopic effect visibility measure (SVM)	0.4
Ambient temperature range	-20 to +45 °C

Product Data

Order product name	CorePro LEDtube UN 1500mm UO 23W865 T8
Full product name	CorePro LEDtube UN 1500mm UO 23W865 T8
Full product code	872016920006700
Order code	929003648602
Material Nr. (12NC)	929003648602
Numerator - Quantity Per Pack	1
EAN/UPC - Product/Case	8720169200067
Numerator - Packs per outer box	20
EAN/UPC - Case	8720169200074

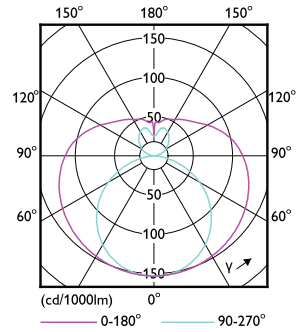
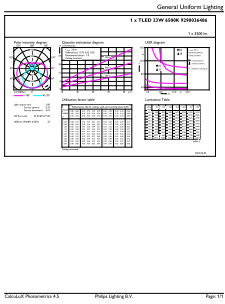
Dimensional drawing



Product	D1	D2	A1	A2	A3
CorePro LEDtube UN 1500mm UO 23W865 T8	26 mm	28 mm	1,500 mm	1,506 mm	1,514 mm

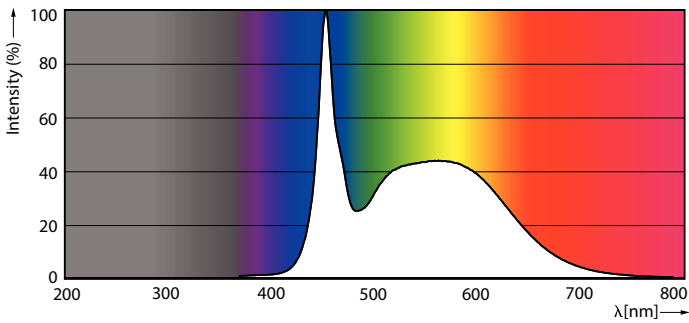
CorePro LED tube Universal T8

Photometric data



General uniform lighting - CorePro LEDtube UN 1500mm UO 23W865 T8

Light Distribution Diagram - CorePro LEDtube UN 1500mm UO 23W865 T8

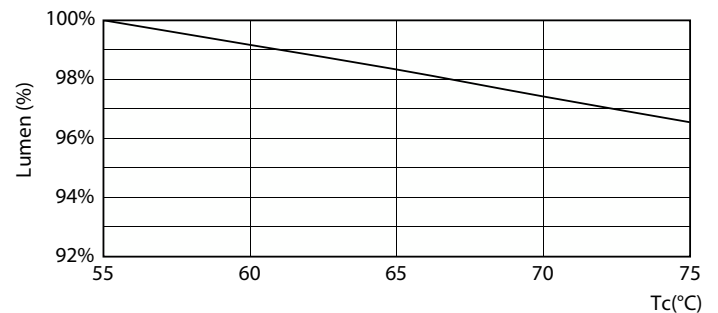


Spectral Power Distribution Colour - CorePro LEDtube UN 1500mm UO 23W865 T8

Lifetime



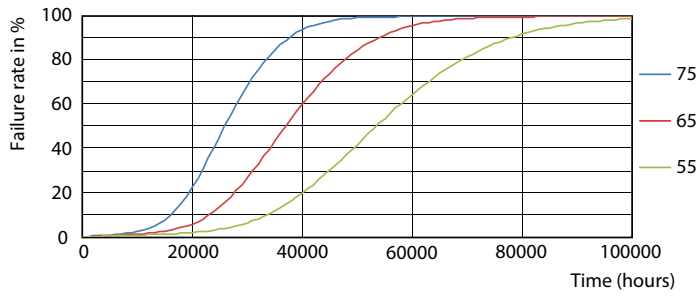
Life Expectancy Diagram



Lumen Maintenance Diagram - CorePro LEDtube UN 1500mm UO 23W865 T8

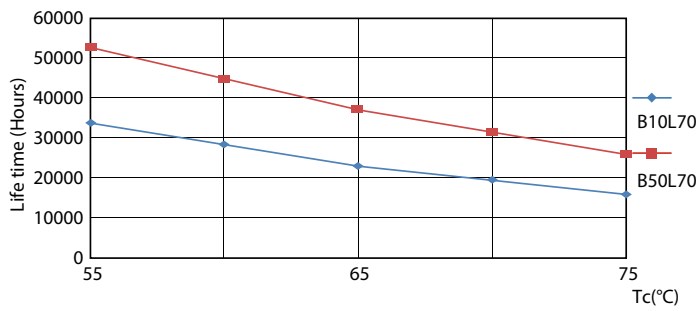
CorePro LED tube Universal T8

Lifetime



FailureRate

Lumen Maintenance Diagram - CorePro LEDtube UN 1500mm UO 23W865 T8



LifetimeVsTc

