

CorePro LED PLL



CorePro LED PLL HF 24W 840 4P 2G11

Philips CorePro LED PLL is the ideal uplamping solution for downlights & luminaires in a wide range of general lighting applications. It integrates a LED light source into a traditional fluorescent form factor to offer superb energy savings over a lifetime that's twice as long as fluorescent alternatives.

Product data

| General Information | |
|--|--------------------|
| Cap-Base | 2G11 |
| Nominal lifetime | 30,000 hour(s) |
| Switching Cycle | 50,000 |
| Lighting Technology | LED |
| Flux measurement reference | Sphere |
| Light Technical | |
| Color Code | 840 [CCT of 4000K] |
| Beam Angle (Nom) | 160 degree(s) |
| Luminous Flux | 3,400 lm |
| Color Designation | Cool White (CW) |
| Correlated Color Temperature (Nom) | 4000 K |
| Luminous Efficacy (rated) (Nom) | 141.00 lm/W |
| Color Consistency | <6 |
| Color rendering index (CRI) | 83 |
| LLMF At End Of Nominal Lifetime (Nom) | 70 % |
| Photobiological safety according to EN 62471 | RG0 |
| Operating and Electrical | |
| Line Frequency | 20000-70000 Hz |
| Input Frequency | 20000-70000 Hz |
| Power Consumption | 24 W |

| | |
|--|---------|
| Lamp Current (Max) | 600 mA |
| Lamp Current (Min) | 400 mA |
| Starting Time (Nom) | 0.5 s |
| Warm-up time to 60% light | 0.5 s |
| Power Factor (Fraction) | 0.9 |
| Voltage (Nom) | 53-77 V |
| Ballast Compatibility | HF |
| LED alternative to fluorescent lamp power | 55 W |
| Inrush current at mains | - |
| Max. lamp no. on MCB B type 10A - Mains | - |
| Max. lamp no. on MCB B type 10A – EM ballast without Compensation Capacitor. | - |
| Max. lamp no. on MCB B type 10A – EM ballast with Compensation Capacitor. | - |
| Max. lamp no. on MCB B type 16A - Mains | - |
| Max. lamp no. on MCB B type 16A – EM ballast without Compensation Capacitor. | - |
| Max. lamp no. on MCB B type 16A – EM ballast with Compensation Capacitor. | - |

| Temperature | |
|----------------------|-------|
| T-Case Maximum (Nom) | 70 °C |

CorePro LED PLL

Controls and Dimming

| | |
|----------|----|
| Dimmable | No |
|----------|----|

Mechanical and Housing

| | |
|--------------------|----------|
| Product Length | 528 mm |
| Bulb Shape | PL-L |
| Net Weight (Piece) | 0.160 kg |

Approval and Application

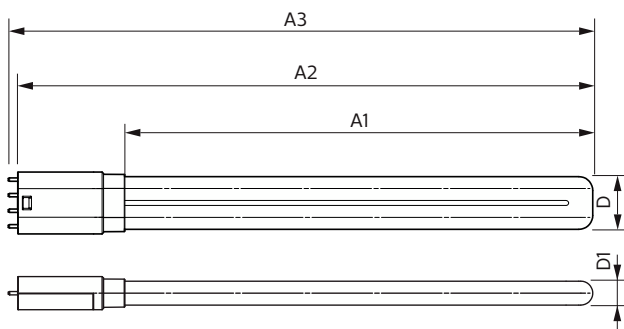
| | |
|-------------------------------|-----------------|
| Energy Efficiency Class | E |
| Energy Saving Product | Yes |
| Approval Marks | RoHS compliance |
| Energy Consumption kWh/1000 h | 24 kWh |
| EPREL Registration Number | 387356 |
| CE mark | Yes |
| EU RoHS compliant | Yes |

| | |
|---------------------------|-----------------|
| Ambient temperature range | -20 °C to 45 °C |
|---------------------------|-----------------|

Product Data

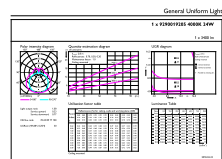
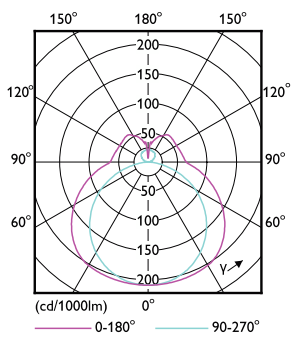
| | |
|---------------------------------|------------------------------------|
| Order product name | CorePro LED PLL HF 24W 840 4P 2G11 |
| Full product name | CorePro LED PLL HF 24W 840 4P 2G11 |
| Full product code | 871869682841000 |
| Order code | 929001920502 |
| Material Nr. (12NC) | 929001920502 |
| Numerator - Quantity Per Pack | 1 |
| EAN/UPC - Product/Case | 8718696828410 |
| Numerator - Packs per outer box | 10 |
| EAN/UPC - Case | 8718696828427 |

Dimensional drawing



| Product | D1 | D2 | A1 | A2 | A3 |
|------------------------------------|-------|-------|--------|--------|--------|
| CorePro LED PLL HF 24W 840 4P 2G11 | 17 mm | 38 mm | 453 mm | 528 mm | 535 mm |

Photometric data

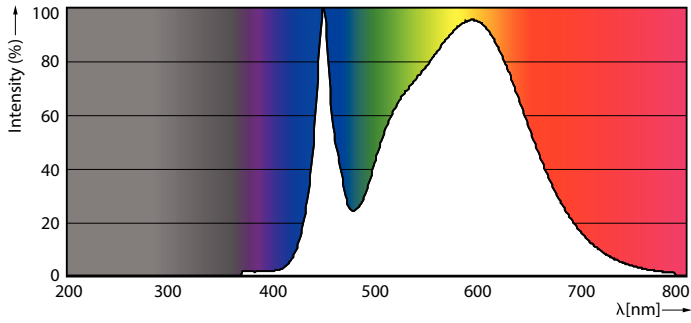


Light Distribution Diagram - CorePro LED PLL HF 24W 840 4P 2G11

General uniform lighting - CorePro LED PLL HF 24W 840 4P 2G11

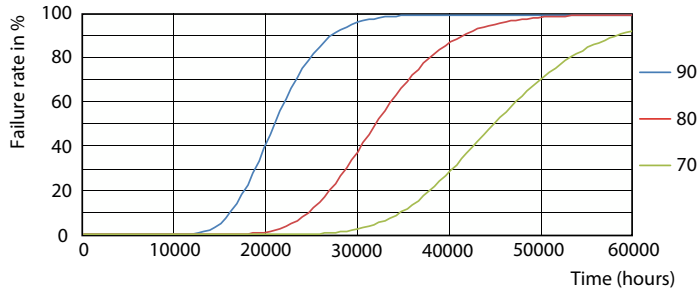
CorePro LED PLL

Photometric data

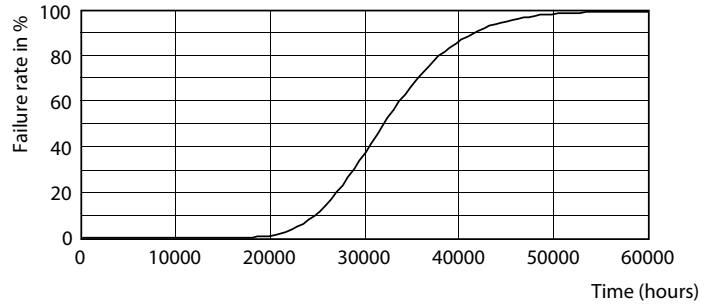


Spectral Power Distribution Colour - CorePro LED PLL HF 24W 840 4P 2G11

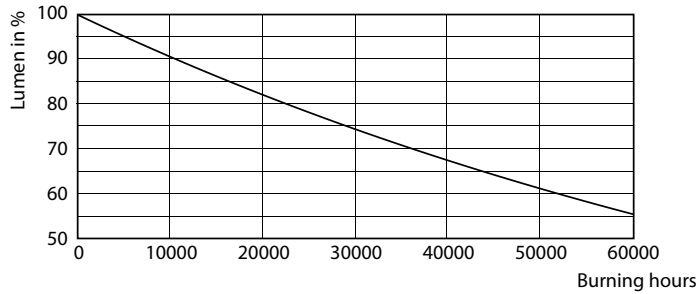
Lifetime



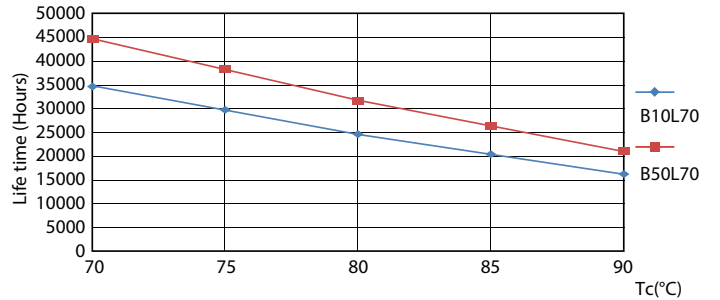
LEDtube CorePro PLL HF 24W 2G11 830 24D ND



LEDtube CorePro PLL HF 24W 2G11 830 24D ND



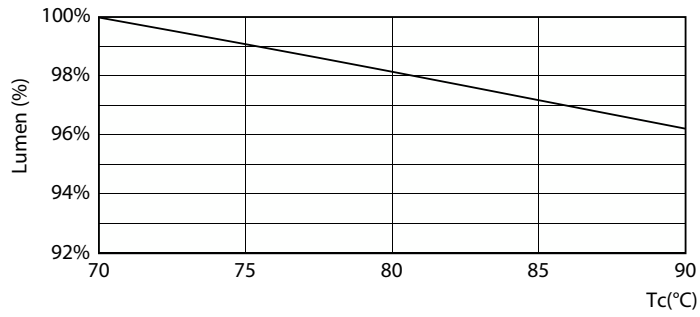
Lumen Maintenance Diagram - CorePro LED PLL HF 24W 840 4P 2G11



LEDtube CorePro PLL HF 24W 2G11 830 24D ND

CorePro LED PLL

Lifetime



Lumen Maintenance Diagram - CorePro LED PLL HF 24W 840 4P 2G11

