

Measuring transducers

Indicators and transducers



Power transducer, current



Current transducer

Function

SOCOMEC **transducers** convert an electrical parameter (A, W) into a DC signal. They come in a protruding case (CS range).

Characteristics

- Dielectric quality:
 - 2.5 kV (50 Hz - 1 mm) between input and output,
 - 2.5 kV (50 Hz - 1 mm) between power supply and other terminals,
 - 4 kV (50 Hz - 1 mm) between earth and other terminals.
- Accuracy class: 0.5 or 0.2 depending on the model.
- Response time < 200 ms (0 - 90% of the output signal).
- Overloads:
 - Circuit I: 1.2 I_n permanent; 20 I_n/3 s, - 40 I_n/1 s,
 - Circuit U: 1.2 U_n permanent; 2 U_n/10 s.
- Max. load resistance:
 - Current output: R_O (Ω) = 12 V/I_O (mA),
 - Voltage output: R_O (Ω) = V_O/I_O mA.
- Consumption:
 - Self-powered: 1.5 VA,
 - Current input: 0.2 VA,
 - Voltage input: (U_n x 1 mA) VA.
- Operating temperature: -10 °C to +60°C.
- Residual ripple rate: 0.3%.
- Operating frequency: 50/60 Hz.

References

Current transducer with auxiliary power supply

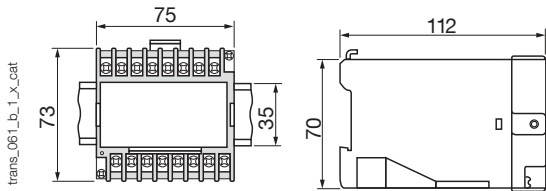
				CSA-A4
Input	Output	Auxiliary power supply	Frequency	Reference
5 A	4 - 20 mA	230 VAC	50 Hz	192Y 1104
1 A	4 - 20 mA	230 VAC	50 Hz	192Y 1106

Active power transducer with auxiliary power supply

				CSA-P3FE Three-phase	CSA-P3FNE Three-phase	CSA-P4FNE Three-phase
Input	Connection	Output	Auxiliary power supply	Reference	Reference	Reference
400 VAC	5 A CT	4 - 20 mA	230 VAC	192Y 3132	192Y 3332	192Y 3432
400 VAC	5 A CT	4 - 20 mA	24 VDC	179Y 3133	-	-
400 VAC	5 A CT	4 - 20 mA	24 VDC	-	179Y 3333	-

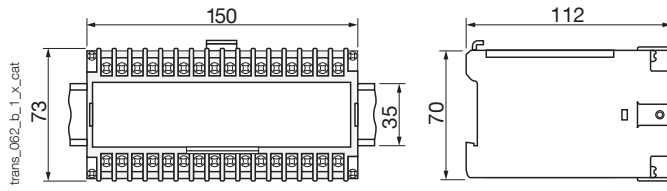
Cases

Case A



IP20 for the case - IP10 for the terminal

Case B



IP20 for the case - IP10 for the terminal

Characteristics

Current transducer

Model	Measurement	Input	Output	Auxiliary power supply U_s	Number of CTs	Connection diagram	Case
CSA-A	RMS ⁽¹⁾	1 - 5 A	1 - 5 - 10 - 20 mA	No	1	SC 1	A

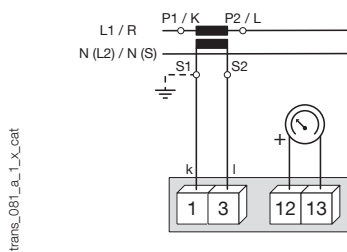
(1) RMS: sine wave.

Active power transducer

Model	Network type	Input	Output	Auxiliary power supply U_s	Number of CTs	Connection diagram	Case
CSA-P3FE	Balanced 3-wire 3-phase	100 - 115 - 230 - 400 V 1 - 5 A	1 - 5 - 10 - 20 mA 4 - 20 mA	Yes	1	SC 16	B
CSA-P3FNE	Non-balanced 3-wire 3-phase	100 - 115 - 230 - 400 V 1 - 5 A	1 - 5 - 10 - 20 mA 4 - 20 mA	Yes	2	SC 18	B
CSA-P4FNE	Non-balanced 4-wire 3-phase	100 - 115 - 230 - 400 V 1 - 5 A	1 - 5 - 10 - 20 mA 4 - 20 mA	Yes	3	SC 20	B

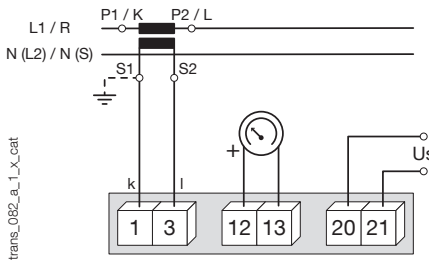
Connections

SC 1: Self-powered current transducer (CSA-A)



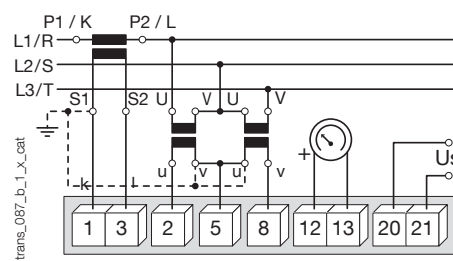
Connections with 1 CT without U_s

SC 2: Current transducer with auxiliary power supply (CSA-A4)



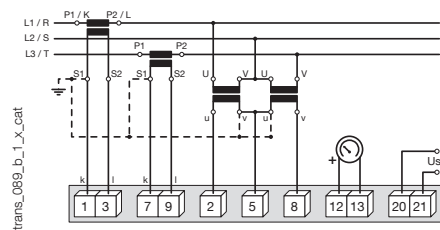
Connections with 1 CT and U_s

SC 16: Power transducer (CSA-P3FE)



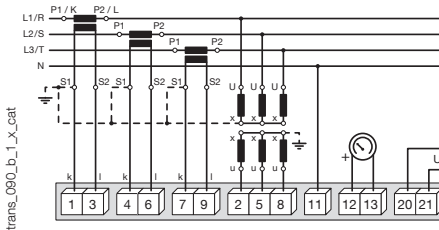
Connections with 1 CT 2 VTs and U_s

SC 18: Power transducer (CSA-P3FNE)



Connections with 2 CT 2 VTs and U_s

SC 20: Power transducer (CSA-P4FNE)



Connections with 3 CT 3 VTs and U_s