



MASTER LEDtube EM/ Mains T8



MASTER LEDtube 1200mm UO 13.5W 865 T8 EELB

The Philips MASTER LEDtube integrates a LED light source into a traditional fluorescent form factor. Its unique design creates a perfectly uniform visual appearance which cannot be distinguished from traditional fluorescent. For those that are looking for value for money within limited budget and re-lamping efforts for better light effect and lifetime.

Warnings and Safety

• –

Product data

General Information	
Cap-Base	G13 ROT
Nominal lifetime	75,000 hour(s)
Switching Cycle	200,000
Lighting Technology	LED
Flux measurement reference	Sphere
Light Technical	
Color Code	865 [CCT of 6500K]
Beam Angle (Nom)	160 degree(s)
Luminous Flux	2,500 lm
Color Designation	Cool Daylight
Correlated Color Temperature (Nom)	6500 K
Luminous Efficacy (rated) (Nom)	185 lm/W
Color Consistency	<6
Color rendering index (CRI)	80
LLMF At End Of Nominal Lifetime (Nom)	70 %

Photobiological safety according to EN 62471	RG0
Operating and Electrical	
Input Frequency	50 to 60 Hz
Power Consumption	13.5 W
Lamp Current (Max)	69 mA
Lamp Current (Min)	56 mA
Starting Time (Nom)	0.5 s
Warm-up time to 60% light	0.5 s
Power Factor (Fraction)	0.9
Voltage (Nom)	220–240 V
LED alternative to fluorescent lamp power	36 W
Inrush current at mains	7.4
Max. lamp no. on MCB B type 10A – Mains	100
Max. lamp no. on MCB B type 10A – EM ballast without Compensation Capacitor.	100

MASTER LEDtube EM/Mains T8

Max. lamp no. on MCB B type 10A – EM ballast with Compensation Capacitor.	15
Max. lamp no. on MCB B type 16A – Mains	160
Max. lamp no. on MCB B type 16A – EM ballast without Compensation Capacitor.	160
Max. lamp no. on MCB B type 16A – EM ballast with Compensation Capacitor.	25
Ballast Compatibility	EM/Mains

Temperature

T-Case Maximum (Nom)	50 °C
----------------------	-------

Controls and Dimming

Dimmable	No
----------	----

Mechanical and Housing

Bulb Finish	Frosted
Bulb Material	Plastic
Product Length	1,200 mm
Bulb Shape	T8
Net Weight (Piece)	0.220 kg

Approval and Application

Energy Efficiency Class	B
Energy Saving Product	Yes
Approval Marks	RoHS compliance CE marking KEMA Keur certificate ENEC certificate

Energy Consumption kWh/1000 h	14 kWh
EPREL Registration Number	2144202
CE mark	Yes
EU RoHS compliant	Yes
LED Innovations	UltraEfficient
Flickering value (PstLM) – Flickering value as per EN 61000-3-3	0.1
Stroboscopic effect visibility measure (SVM)	0.1
Ambient temperature range	-20 to +45 °C

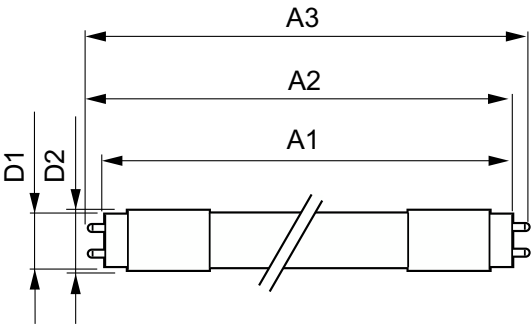
Application Conditions

can it be used in closed luminaires	Yes
-------------------------------------	-----

Product Data

Order product name	MAS LEDtube 1200mm UO 13.5W 865 T8 EELB
Full product name	MASTER LEDtube 1200mm UO 13.5W 865 T8 EELB
Full product code	872016938797300
Order code	38797300
Material Nr. (12NC)	929004242002
Numerator – Quantity Per Pack	1
EAN/UPC – Product/Case	8720169387973
Numerator – Packs per outer box	10
EAN/UPC – Case	8720169387980

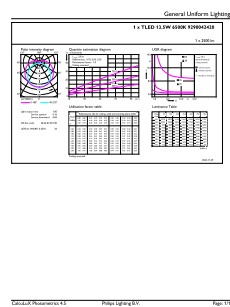
Dimensional drawing



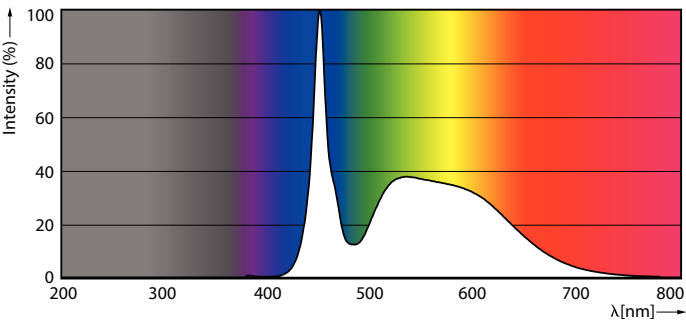
Product	D1	D2	A1	A2	A3
MAS LEDtube 1200mm UO 13.5W 865 T8 EELB	25.8 mm	28 mm	1,198.2 mm	1,205.3 mm	1,212.4 mm

MASTER LEDtube EM/Mains T8

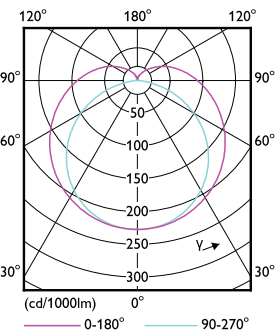
Photometric data



General uniform lighting - MAS LEDtube 1200mm UO 13.5W 865 T8 EELB

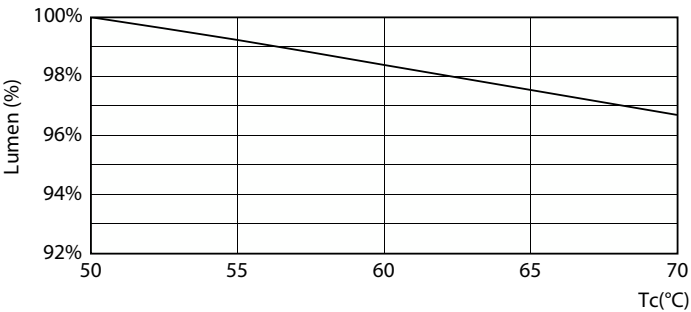


Spectral Power Distribution Colour - MAS LEDtube 1200mm UO 13.5W 865 T8 EELB

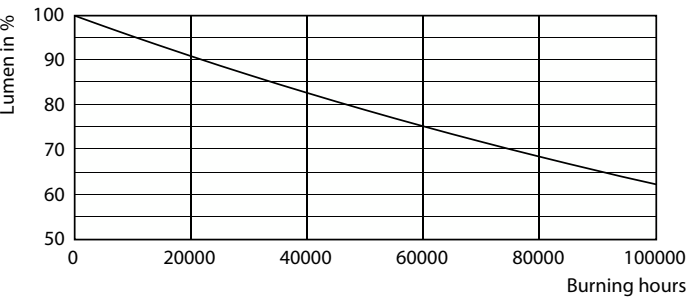


Light Distribution Diagram - MAS LEDtube 1200mm UO 13.5W 865 T8 EELB

Lifetime



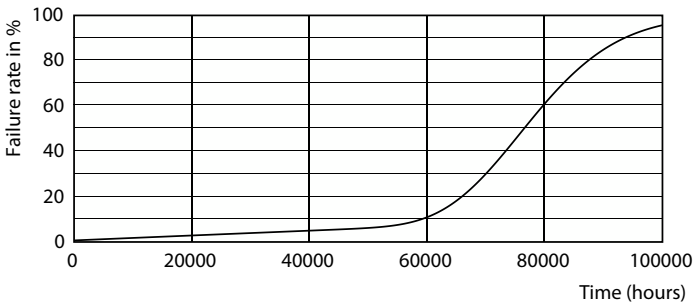
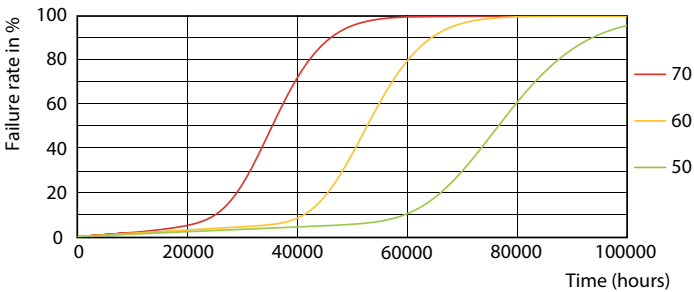
Lumen Maintenance Diagram - MAS LEDtube 1200mm UO 13.5W 865 T8 EELB



Lumen Maintenance Diagram - MAS LEDtube 1200mm UO 13.5W 865 T8 EELB

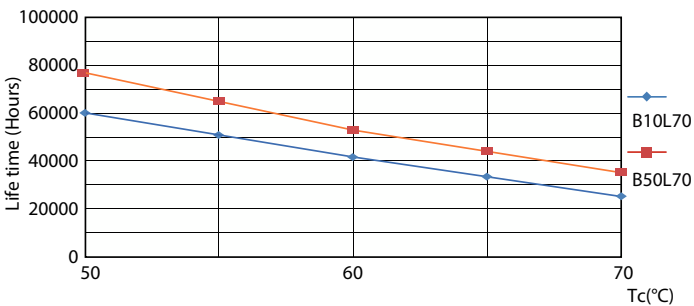
MASTER LEDtube EM/Mains T8

Lifetime



LEDtube-75K-5070-FailureRate-LED

Life Expectancy Diagram



LifetimeVsTc

