



MASTER Value LEDtube T8



MAS LEDtube VLE 600mm HO 8W 865 T8

A high-performance LED solution, the professional MASTER Value LED tube is ideal for replacing T8 fluorescent lamps using EM ballast or installing directly on the mains. This product provides an optimal combination of value and performance – for use in all general lighting, office, industry, retail, and hospitality applications. The unique design of this LED T8 tube light offers wide compatibility, safety and fast installation, as well as instant energy savings.

Product data

General Information	
Cap-Base	G13 [Medium Bi-Pin Fluorescent]
Nominal lifetime	60,000 hour(s)
Switching Cycle	200,000
Lighting Technology	LED
Flux measurement reference	Sphere
Light Technical	
Color Code	865 [CCT of 6500K]
Beam Angle (Nom)	190 degree(s)
Luminous Flux	1,050 lm
Color Designation	Cool Daylight
Correlated Color Temperature (Nom)	6500 K
Luminous Efficacy (rated) (Nom)	131 lm/W
Color Consistency	<6
Color rendering index (CRI)	80
LLMF At End Of Nominal Lifetime (Nom)	70 %
Photobiological safety according to EN 62471	RG0

Operating and Electrical	
Line Frequency	50 to 60 Hz
Input Frequency	50 to 60 Hz
Power Consumption	8 W
Lamp Current (Max)	38 mA
Lamp Current (Min)	34 mA
Starting Time (Nom)	0.5 s
Warm-up time to 60% light	0.5 s
Power Factor (Fraction)	0.9
Voltage (Nom)	220-240 V
Ballast Compatibility	EM/Mains
LED alternative to fluorescent lamp power	18 W
Inrush current at mains	8
Max. lamp no. on MCB B type 10A - Mains	90
Max. lamp no. on MCB B type 10A – EM ballast without Compensation Capacitor.	180
Max. lamp no. on MCB B type 10A – EM ballast with Compensation Capacitor.	30
Max. lamp no. on MCB B type 16A - Mains	150

MASTER Value LEDtube T8

Max. lamp no. on MCB B type 16A – EM ballast without Compensation Capacitor.	290
Max. lamp no. on MCB B type 16A – EM ballast with Compensation Capacitor.	49

Temperature

T-Case Maximum (Nom)	55 °C
----------------------	-------

Controls and Dimming

Dimmable	No
----------	----

Mechanical and Housing

Bulb Finish	Frosted
Bulb Material	Glass
Product Length	600 mm
Bulb Shape	T8
Net Weight (Piece)	0.110 kg

Approval and Application

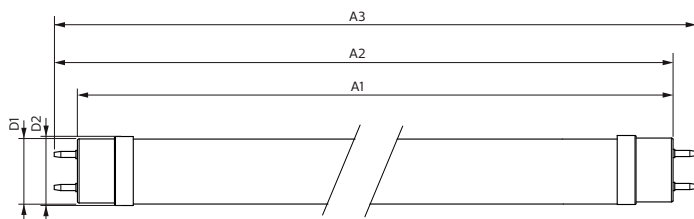
Energy Efficiency Class	E
Energy Saving Product	Yes
Approval Marks	RoHS compliance TUV CE marking KEMA Keur certificate

Energy Consumption kWh/1000 h	8 kWh
EPREL Registration Number	1095864
CE mark	Yes
EU RoHS compliant	Yes
Flickering value (PstLM) - Flickering value as per EN 61000-3-3	1
Stroboscopic effect visibility measure (SVM)	0.4
Ambient temperature range	-20 °C to 45 °C

Product Data

Order product name	MAS LEDtube VLE 600mm HO 8W 865 T8
Full product name	MAS LEDtube VLE 600mm HO 8W 865 T8
Full product code	871869964683700
Order code	929002021302
Material Nr. (12NC)	929002021302
Numerator - Quantity Per Pack	1
EAN/UPC - Product/Case	8718699646837
Numerator - Packs per outer box	10
EAN/UPC - Case	8718699646844

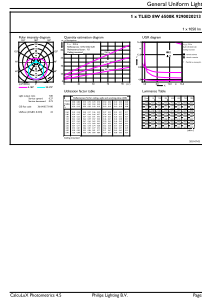
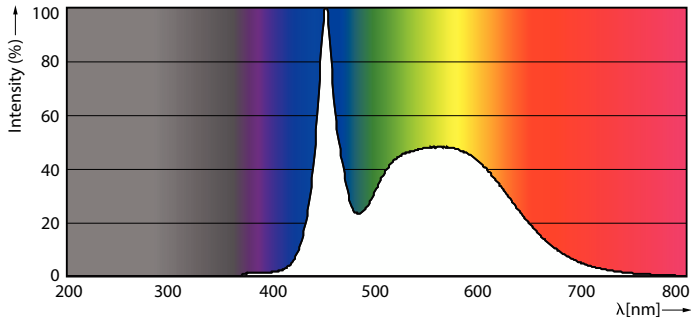
Dimensional drawing



Product	D1	D2	A1	A2	A3
MAS LEDtube VLE 600mm HO 8W 865 T8	25.8 mm	28 mm	588.5 mm	595.5 mm	602.5 mm

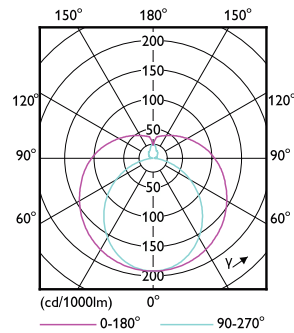
MASTER Value LEDtube T8

Photometric data



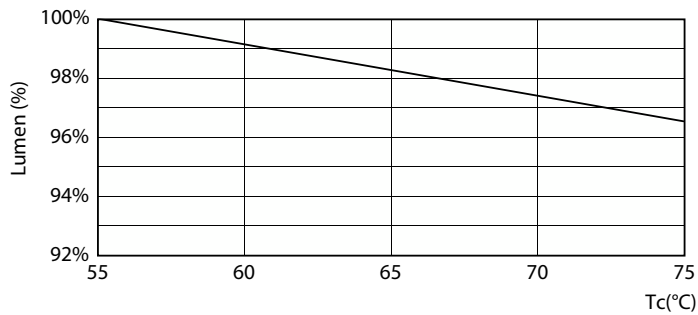
Spectral Power Distribution Colour - MAS LEDtube VLE 600mm HO 8W 865 T8

General uniform lighting - MAS LEDtube VLE 600mm HO 8W 865 T8

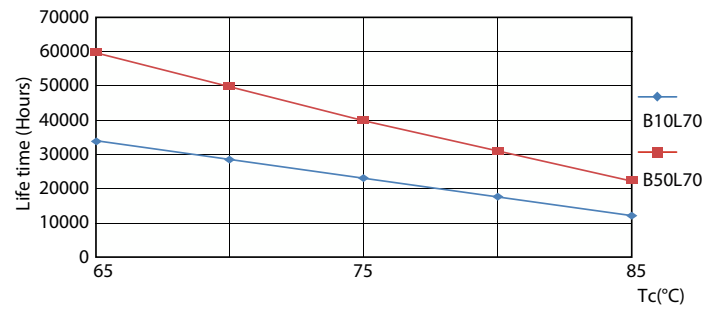


Light Distribution Diagram - MAS LEDtube VLE 600mm HO 8W 865 T8

Lifetime



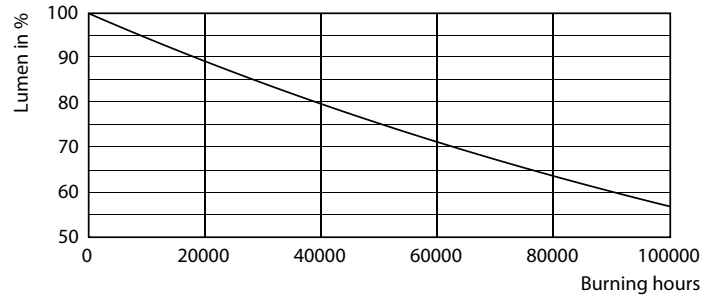
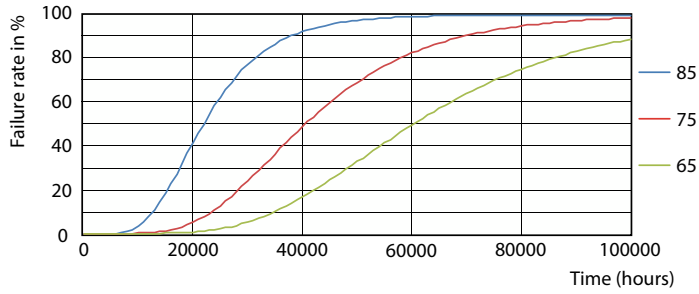
Lumen Maintenance Diagram - MAS LEDtube VLE 600mm HO 8W 865 T8



LifetimeVsTc

MASTER Value LEDtube T8

Lifetime



FailureRate

Lumen Maintenance Diagram - MAS LEDtube VLE 600mm HO 8W 865 T8



Life Expectancy Diagram

