

# Axyl Glow

THORN

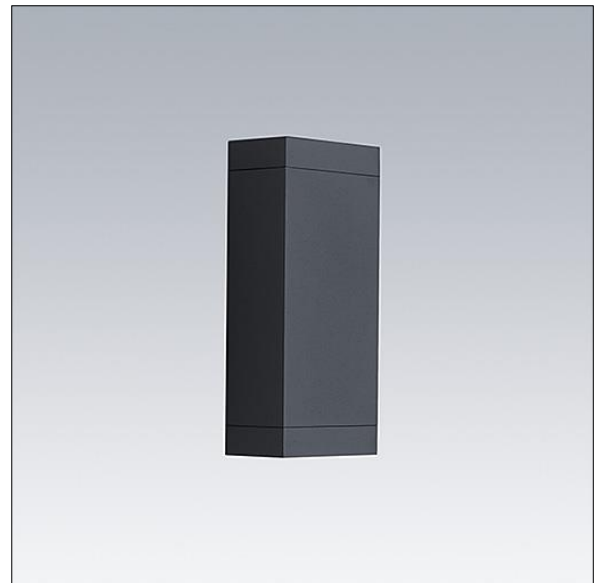
## 96700177 AXYL GLOW M DWN 3L930 WB HF ANT

LED 10W AXYL_GLOW_3M_930	IP65	IK06			
--------------------------	------	------	---	---	--

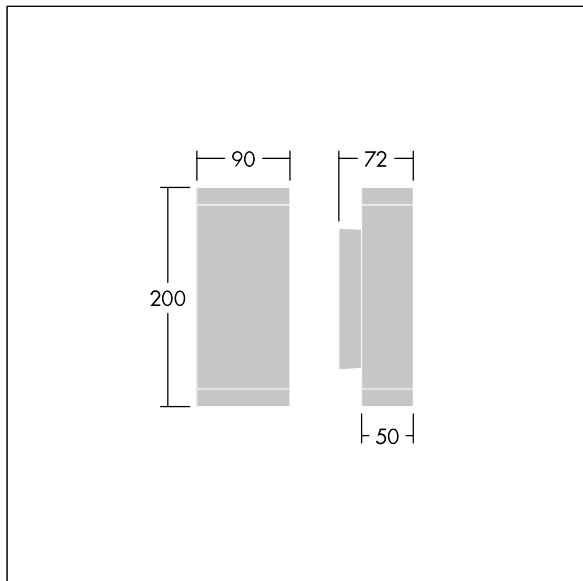
### Axyl Glow

Axyl Glow, a wall mounted, architectural LED luminaire for decorative facade lighting, with wide beam distribution. Class II electrical.. Fixed output LED driver. , IP65, Impact strength: IK06. Housing: die-cast aluminium, powder coated textured anthracite. Working ambient temperature: -20°C to +50°C. Complete with 3000K LED..

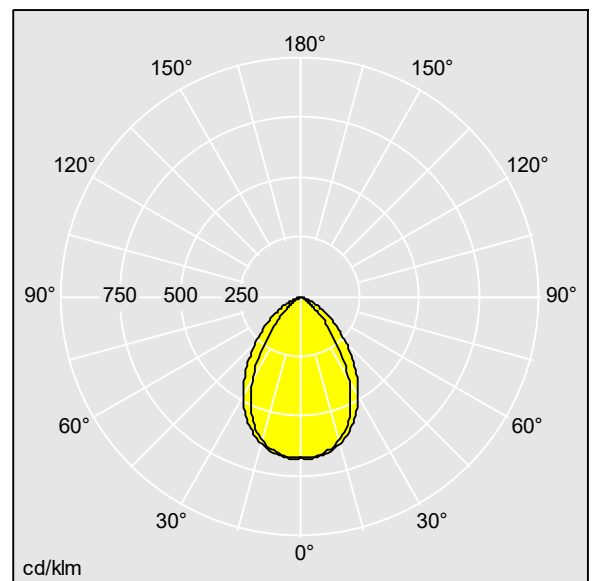
Dimensions: 90 x 200 x 72 mm  
Luminaire input power: 10 W  
Luminaire luminous flux: 338 lm  
Luminaire efficacy: 34 lm/W  
Weight: 1.72 kg



TLG\_AXYL\_F\_GLOW\_M\_ANT.jpg



TLG\_AXYL\_M\_GLOW\_M\_DWN.wmf



96700177.ltd

Lamp position: STD - standard  
Light Source: LED  
Luminaire luminous flux\*: 338 lm  
Luminaire efficacy\*: 34 lm/W  
Colour Rendering Index min.: 90  
Correlated colour temperature\*: 3000 Kelvin

Chromaticity tolerance (initial MacAdam): 3  
Rated useful life (B10)\*:  
L80 70000 h at 25 °C  
Ballast: 1x LED\_DRV  
Luminaire input power\*: 10 W Power factor = 0.95  
Dimming: FIX  
LOR: 1,00 ULOR: 0,00 DLOR: 1,00

This product contains a light source of energy efficiency class E.

All values marked with an \* are rated values. Thorn uses tried and tested components from leading suppliers, however there may be isolated instances of technology-related failures of individual LEDs during the rated product lifetime. International standards set the tolerance in initial flux and connected load at  $\pm 10\%$ . Unless stated otherwise, the values apply to an ambient temperature of 25°C.

Thorn Lighting is constantly developing and improving its products. The right is reserved to change specifications without prior notification or public announcement.  
© Thorn Lighting