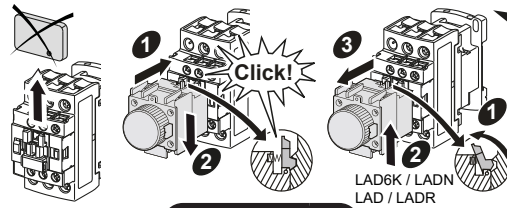
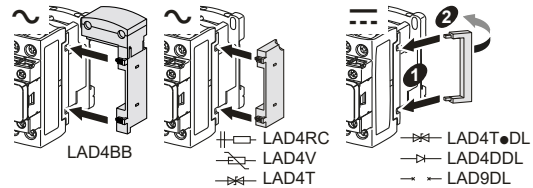


Schneider Electric Industries SAS  
35 Rue Joseph Monier  
92506 Rueil Malmaison, France

www.se.com/contact  
W9 1378323 0211 A11  
02/2021



	LC1D09/ D12	LC1DT20/ DT25/ D098/D128	LC1D18	LC1D25/ D32/D38	LC1DT32/ DT40/ D188/D258	LC1D●●, LA●●
	8 mm 5/16"	12 mm 6/13"	8 mm 5/16"	10 mm 3/8"	12 mm 6/13"	8 mm 5/16"
	1...4	1...4	1.5...6	2.5...10	2.5...10	1...4
	1...4	1...4	1.5...6	2.5...10	2.5...10	1...4
	1...4	1...4	1...6	1...10	2.5...10	1...4
	1...2.5	1...2.5	1...4	1.5...6	2.5...10	1...2.5
	1...4	1...4	1.5...6	1.5...10	2.5...16	1...4
	1...4	1...4	1.5...6	2.5...10	2.5...16	1...4
AWG	10-18 CU 75°C	10-18 CU 75°C	8-18 CU 75°C	6-14 CU 75°C	8-12 CU 75°C	10-18 CU 75°C
	6 mm	6 mm	6 mm	6 mm	6 mm	6 mm
	1.7 N.m 15 lb-in	1.7 N.m 15 lb-in	1.7 N.m 15 lb-in	2.5 N.m 22 lb-in	1.8 N.m 16 lb-in	1.7 N.m 15 lb-in



**WARNING / 警告**

**RISK OF FIRE OR ELECTRIC SHOCK (FOR CONTACTOR WITH UL HI-FAULT SHORT CIRCUIT CURRENT RATINGS ONLY)**

■ The opening of the branch-circuit protective device may be an indication that a fault current has been interrupted.

■ To reduce the risk of fire or electric shock, current-carrying parts and the other components of the controller should be examined and replaced if damaged.

**Failure to follow these instructions can result in death, serious injury, or equipment damage.**

可能有火灾或者触电的危险 (仅限UL高故障短路电流额定值的接触器)

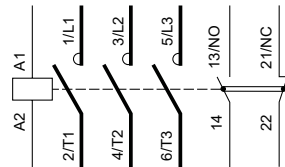
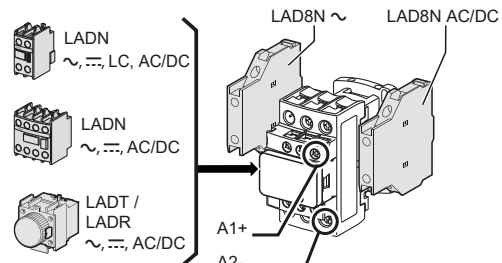
■ 支路保护设备断开, 表明故障电流已被中断。

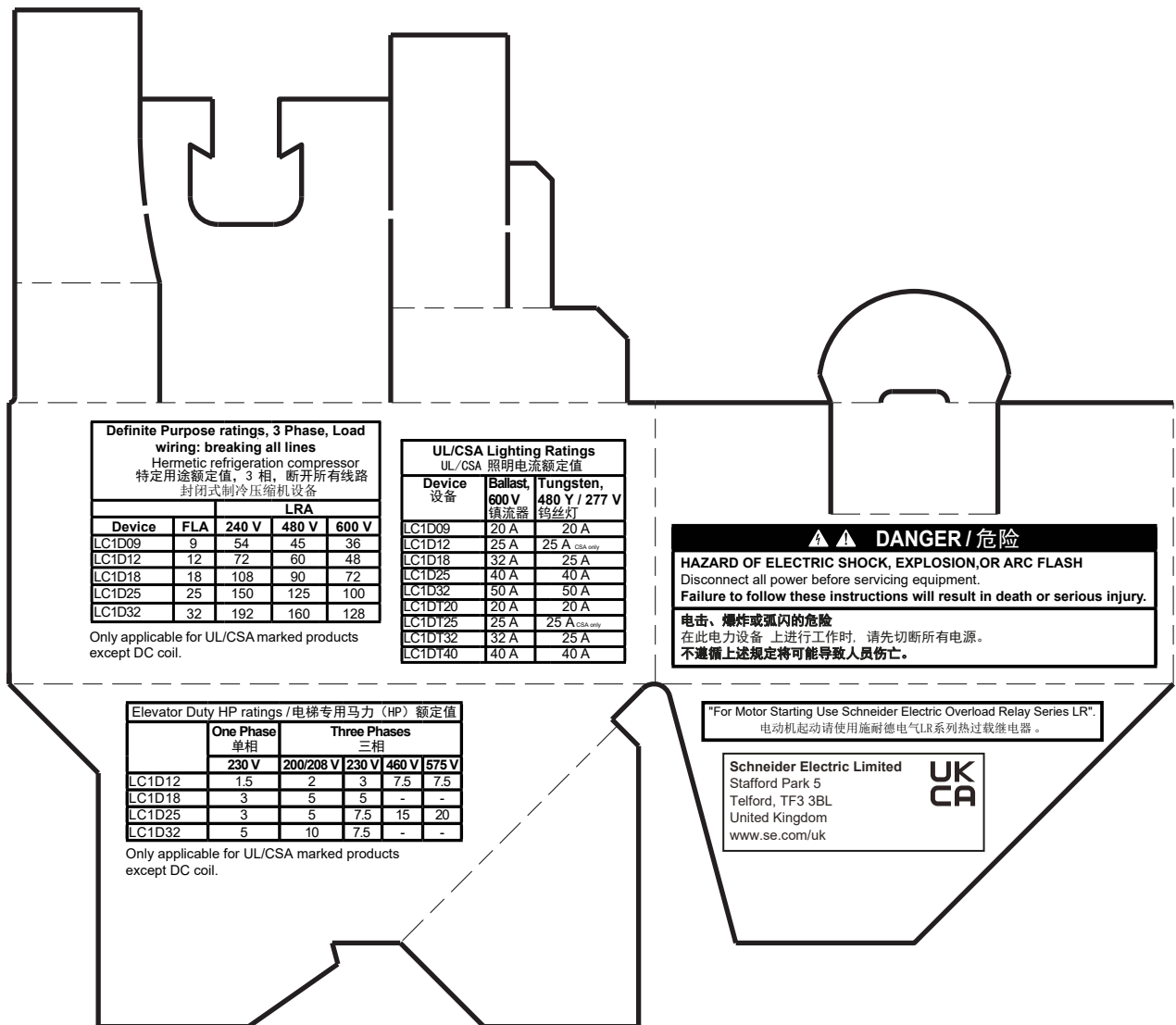
■ 为降低火灾或触电风险, 应检查带电部件和 其他控制元件, 如有损坏, 需及时更换。不遵循上述说明可能导致人员伤亡或设备损坏。

3P AC TeSys D contactors are grade 3 (LC1D09 -> LC1D18) and grade 2 (LC1D25 -> LC1D38) according to GB 21518. Maximum power consumption lower than 9.5 VA.

根据GB 21518标准, 三极 TeSys D 系列交流接触器能效等级为3级 (LC1D09 -> LC1D18) 和2级 (LC1D25 -> LC1D38), 产品最大吸持功率低于9.5VA。

AC/DC: - use of this product in EMC environment B may require mitigation measures to avoid unwanted disturbance.  
- full open AC at 10%Us





Schneider Electric Industries SAS  
 35, rue Joseph Monier  
 CS 30323  
 F - 92506 Rueil Malmaison Cedex

www.se.com/contact

W9 1378323 0211 A14

© 2021 Schneider Electric - All rights reserved.

2/2