



CoreLine Wall-mounted

WL140V 14_24_40S/827_830_840 PSU MDU WH

CoreLine Wall-mounted, 30 W, 12 W, 1400 lm, 4050 lm, 2700 K, 3000 K, 4000 K, MDU2, EL-ready

Whether for a new building or renovation of an existing space, customers want lighting solutions that provide quality of light and substantial energy and maintenance savings. The new CoreLine Wall-mounted range of LED products can be used to replace traditional wall-mounted luminaires incorporating compact fluorescent lamps. The process of selecting, installing and maintaining is so easy – it's a simple switch.

Warnings and Safety

- For outdoor operations; wall-mounted applications only and all cables should run indoors with a maximum distance of 10 meters

Product data

General Information	
Number of gear units	1 unit
Driver included	Yes
Value ladder	Performance
Serviceability class	Class C, luminaire without serviceable parts, not serviceable
Warranty period	5 years
Sustainability rating	-

Light Technical	
Luminous Flux	1,400 4,050 lm
Correlated Color Temperature (Nom)	2700 3000 4000 K

Luminous Efficacy (rated) (Nom)	135 120 lm/W
Color rendering index (CRI)	>80
Light source color	White
Optic type	Symmetrical
Luminaire light beam spread	120°
All-in Type	All-in, Multi Color Temperature All-in, Multi Lumen

Operating and Electrical	
Input Voltage	220-240 V
Line Frequency	50 or 60 Hz
Inrush current	14 A

CoreLine Wall-mounted

Inrush time	0.007 ms
Power Consumption	30 12 W
Power Factor (Fraction)	0.9
Connection	2 Push-in connector 3-pole
Cable	-
Number of products on MCB of 16 A type B	32
Suitable for random switching	No
Protection class IEC	Safety class II
Total harmonic distortion	20 %

Controls and Dimming

Dimmable	No
Driver/power unit/transformer	Driver
Constant light output	No

Mechanical and Housing

Housing Material	Polycarbonate
Reflector material	-
Optic material	Polymethyl methacrylate
Optical cover material	Polycarbonate
Fixation material	-
Housing Color	White
Optical cover finish	Opal
Overall height	85 mm
Overall diameter	390 mm
Ingress protection code	IP65 [Dust penetration-protected, jet-proof]
Mech. impact protection code	IK10 [20 J vandal-resistant]
Mounting	Ceiling Wall
Net Weight (Piece)	1.400 kg

Emergency Operation

Central Emergency	No
-------------------	----

Approval and Application

Glow-wire test	Temperature 650 °C, duration 30 s
----------------	-----------------------------------

Flammability mark	For mounting on normally flammable surfaces
CE mark	Yes
ENEC mark	ENEC mark
EU RoHS compliant	Yes
Performance ambient temperature Tq	25 °C
Stroboscopic effect visibility measure (SVM)	0.4
Ambient temperature range	-20 to +40 °C

Initial Performance (IEC Compliant)

Luminous flux tolerance	+/-10%
Initial chromaticity	(0.46,0.42) SDCM<3; (0.43,0.40) SDCM<5; (0.38,0.38) SDCM<3
Power consumption tolerance	+/-10%

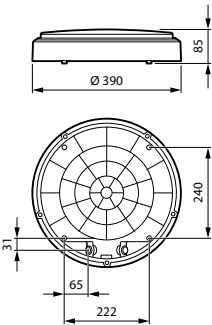
Over Time Performance (IEC Compliant)

Control gear failure rate at median useful life 50000 h	5 %
Lumen maintenance (EN-IEC 62722-2-1) at median useful life* 50000 h	L80

Product Data

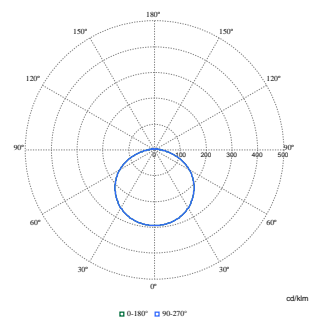
Order product name	WL140V 14_24_40S/827_830_840 PSU MDU WH
Full product name	WL140V 14_24_40S/827_830_840 PSU MDU WH
Full product code	872110330714999
Order code	30714999
Material Nr. (12NC)	911401873787
Numerator - Quantity Per Pack	1
EAN/UPC - Product/Case	8721103307149
Numerator - Packs per outer box	6
EAN/UPC - Case	8721103307194

Dimensional drawing



CoreLine Wall-mounted

Photometric data



Polar Normal (separate) - null - 911401873787

