



# CorePro LED PLL



## CorePro LED PLL HF 8W 830 4P 2G11

Philips CorePro LED PLL is the ideal uplamping solution for downlights & luminaires in a wide range of general lighting applications. It integrates a LED light source into a traditional fluorescent form factor to offer superb energy savings over a lifetime that's twice as long as fluorescent alternatives.

### Product data

General Information	
Cap-Base	2G11
Nominal lifetime	30,000 hour(s)
Switching Cycle	50,000
Lighting Technology	LED
Flux measurement reference	Sphere
Light Technical	
Color Code	830 [CCT of 3000K]
Beam Angle (Nom)	160 degree(s)
Luminous Flux	960 lm
Color Designation	White (WH)
Correlated Color Temperature (Nom)	3000 K
Luminous Efficacy (rated) (Nom)	120 lm/W
Color Consistency	<6
Color rendering index (CRI)	80
LLMF At End Of Nominal Lifetime (Nom)	70 %
Photobiological safety according to EN 62471	RG0
Operating and Electrical	
Line Frequency	20K-80K Hz
Input Frequency	20K-80K Hz
Power Consumption	8 W

Lamp Current (Max)	500 mA
Lamp Current (Min)	150 mA
Starting Time (Nom)	0.5 s
Warm-up time to 60% light	0.5 s
Power Factor (Fraction)	0.9
Voltage (Nom)	20-60 V
Ballast Compatibility	HF
LED alternative to fluorescent lamp power	18 W
Inrush current at mains	-
Max. lamp no. on MCB B type 10A - Mains	-
Max. lamp no. on MCB B type 10A – EM ballast without Compensation Capacitor.	-
Max. lamp no. on MCB B type 10A – EM ballast with Compensation Capacitor.	-
Max. lamp no. on MCB B type 16A - Mains	-
Max. lamp no. on MCB B type 16A – EM ballast without Compensation Capacitor.	-
Max. lamp no. on MCB B type 16A – EM ballast with Compensation Capacitor.	-

Temperature	
T-Case Maximum (Nom)	70 °C

# CorePro LED PLL

## Controls and Dimming

Dimmable	No
----------	----

## Mechanical and Housing

Bulb Finish	Frosted
Bulb Material	Glass
Product Length	217 mm
Bulb Shape	PL-L
Net Weight (Piece)	0.085 kg

## Approval and Application

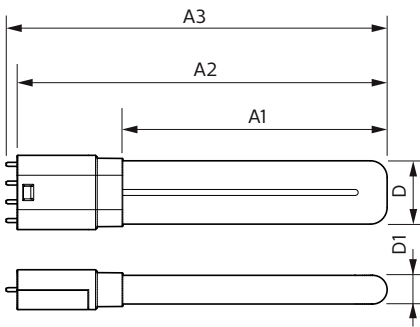
Energy Efficiency Class	E
Energy Saving Product	Yes
Approval Marks	RoHS compliance
Energy Consumption kWh/1000 h	8 kWh
EPREL Registration Number	1370819
CE mark	Yes

EU RoHS compliant	Yes
Ambient temperature range	-20 °C to 45 °C

## Product Data

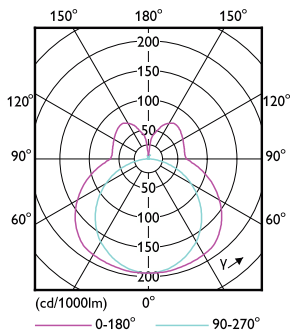
Order product name	CorePro LED PLL HF 8W 830 4P 2G11
Full product name	CorePro LED PLL HF 8W 830 4P 2G11
Full product code	871951448676800
Order code	929003578802
Material Nr. (12NC)	929003578802
Numerator - Quantity Per Pack	1
EAN/UPC - Product/Case	8719514486768
Numerator - Packs per outer box	10
EAN/UPC - Case	8719514486775

## Dimensional drawing

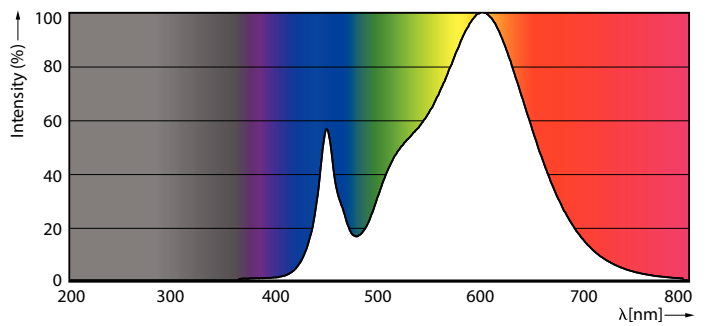


Product	D1	D2	A1	A2	A3
CorePro LED PLL HF 8W 830 4P 2G11	17 mm	38 mm	155 mm	217 mm	224 mm

## Photometric data



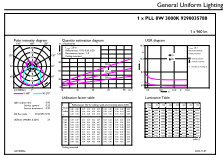
Light Distribution Diagram - CorePro LED PLL HF 8W 830 4P 2G11



Spectral Power Distribution Colour - CorePro LED PLL HF 8W 830 4P 2G11

# CorePro LED PLL

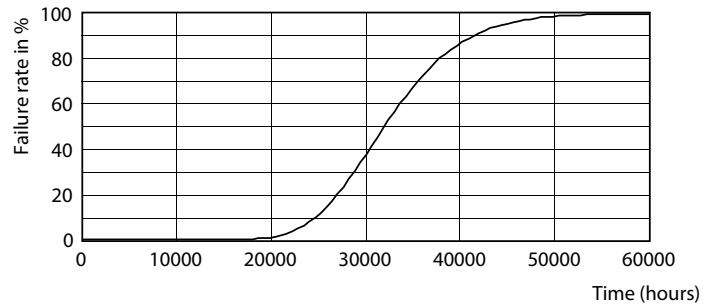
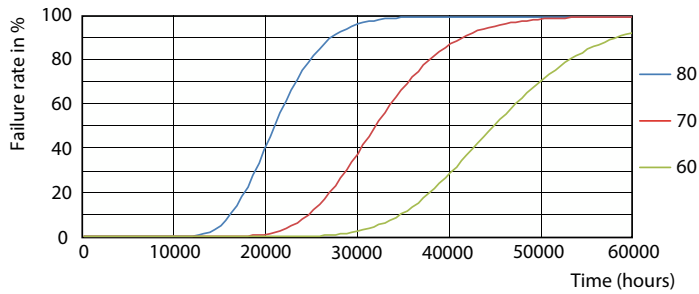
## Photometric data



© 2025 Philips Lighting B.V. Page 11

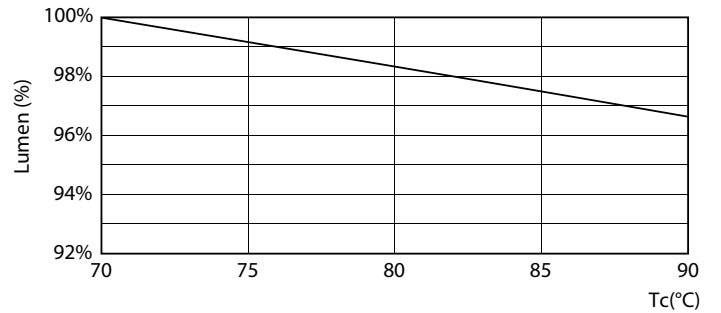
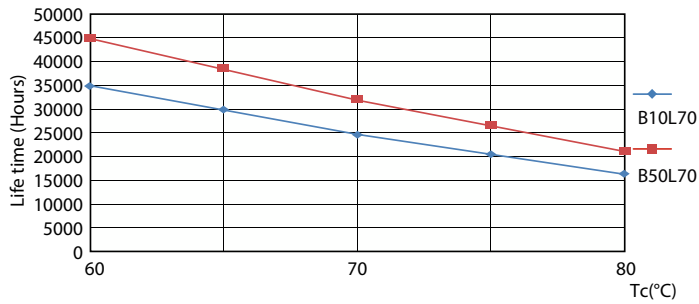
General uniform lighting - CorePro LED PLL HF 8W 830 4P 2G11

## Lifetime



FailureRate

Life Expectancy Diagram

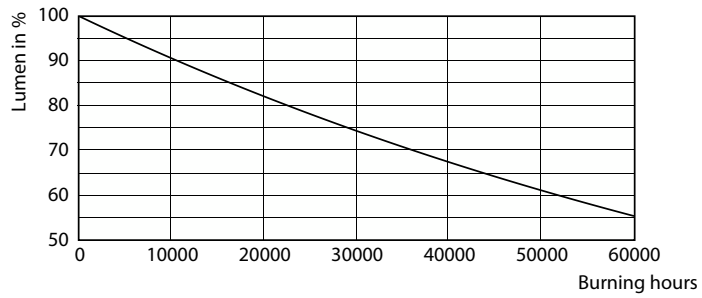


LifetimeVsTc

Lumen Maintenance Diagram - CorePro LED PLL HF 8W 830 4P 2G11

# CorePro LED PLL

## Lifetime



Lumen Maintenance Diagram - CorePro LED PLL HF 8W 830 4P 2G11

