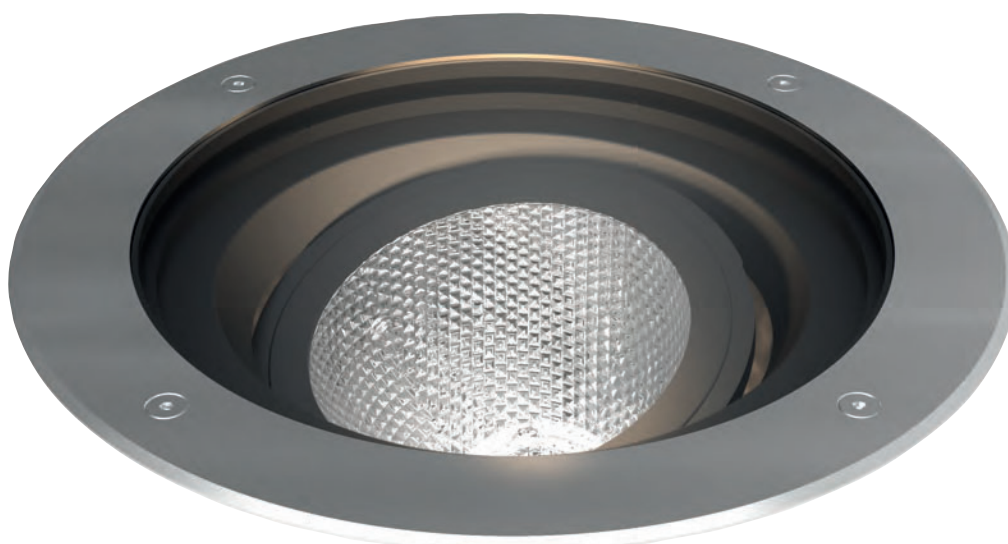
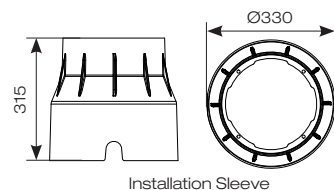
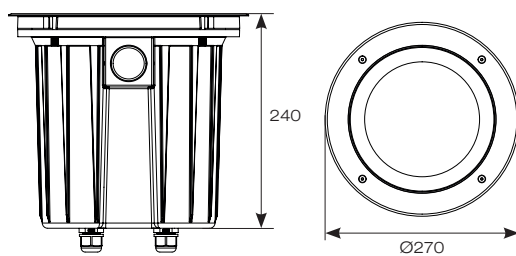


Fresno



- High performance LED adjustable inground uplight suitable for commercial and hospitality applications
- 304L stainless steel bezel and powder coated aluminium housing
- Supplied c/w installation housing for additional protection and ease of installation
- Integral driver and pre-wired with 2 metres of rubber insulated cable
- Static load test to 2000kg and therefore suitable for vehicular and pedestrian traffic
- Non-dimmable



Adjustable 30° beam angle

INPUT	HERTZ	TEMP	LIFETIME (HRS)	CRI	SDCM	BEAM ANGLE	CLASS	IP	IK
230V	50Hz	-20 to 40°C	L80 50,000	Ra 80	3	20°	1	IP67	IK10

CODE	DESCRIPTION	WATTAGE	CCT	LUMENS	LM/W	TRADE
AFRWOLED/270	Warm White	30W	3000K	1770lm	59lm	£377.00
AFRWOLED/270/CW	Cool White	30W	4000K	1938lm	65lm	£377.00

