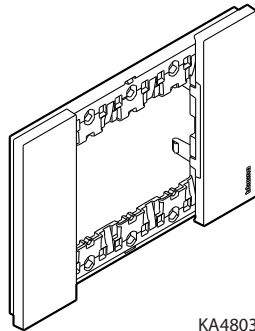


**Cover plates**


KA4803

**1. USE**

Coverplates Living Now from 2 to 6 modules.

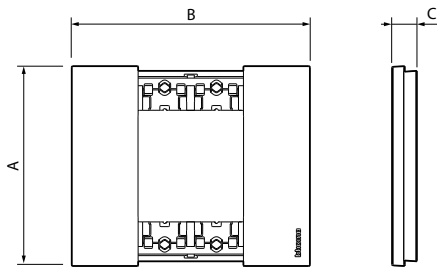
**2. RANGE**

	2 MODULES	3 MODULES	4 MODULES	4 MODULES Australian DGPO	6 MODULES
DESCRIPTION	Item	Item	Item	Item	Item
Coverplate Black	KA4802KG	KA4803KG	KA4804KG	KA4814KG	KA4806KG
Coverplate Sand	KA4802KM	KA4803KM	KA4804KM	-	KA4806KM
Coverplate White	KA4802KW	KA4803KW	KA4804KW	KA4814KW	KA4806KW
Coverplate Night	KA4802DG	KA4803DG	KA4804DG	KA4814DG	KA4806DG
Coverplate Aura	KA4802DM	KA4803DM	KA4804DM	-	KA4806DM
Coverplate Ice	KA4802DW	KA4803DW	KA4804DW	KA4814DW	KA4806DW
Coverplate Sky	KA4802DA	KA4803DA	KA4804DA	KA4814DA	KA4806DA
Coverplate Walnut	KA4802LG	KA4803LG	KA4804LG	KA4814LG	KA4806LG
Coverplate Oak	KA4802LM	KA4803LM	KA4804LM	-	KA4806LM
Coverplate Optic	KA4802MM	KA4803MM	KA4804MM	-	KA4806MM
Coverplate Pixel	KA4802MW	KA4803MW	KA4804MW	KA4814MW	KA4806MW
Coverplate Moon	KA4802NW	KA4803NW	KA4804NW	KA4814NW	KA4806NW
Coverplate Space	KA4802NG	KA4803NG	KA4804NG	KA4814NG	KA4806NG
Coverplate Steel	KA4802ZG	KA4803ZG	KA4804ZG	KA4814ZG	KA4806ZG
Coverplate Cooper	KA4802ZM	KA4803ZM	KA4804ZM	-	KA4806ZM
Coverplate Gold	KA4802ZW	KA4803ZW	KA4804ZW	KA4814ZW	KA4806ZW

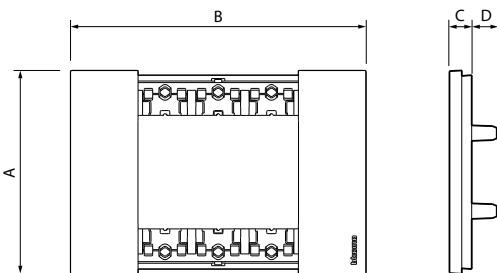
## Cover plates

### 3. OVERALL DIMENSIONS (mm)

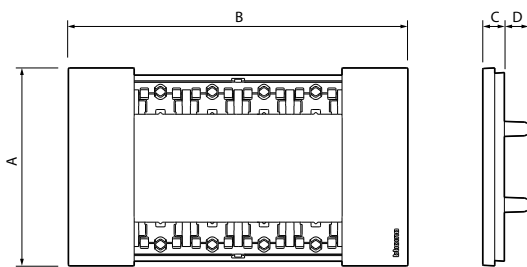
#### ■ Cover 2 modules - (KA4802)



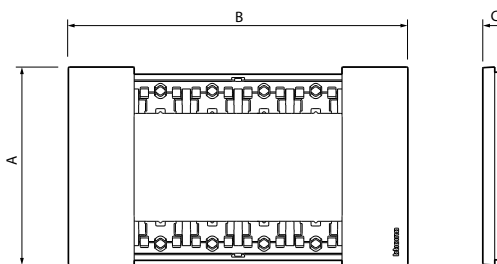
#### ■ Cover 3 modules - (KA4803)



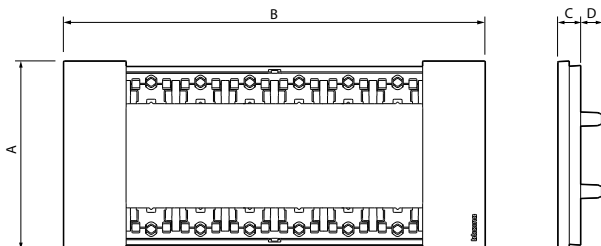
#### ■ Cover 4 modules - (KA4804)



#### ■ Cover 4 modules Australia DGPO - (KA4814)



#### ■ Cover 6 modules - (KA4806)



Coverplate	A	B	C	D
2 M	86	102,5	11	-
3 M	86	125	10	20
4 M	86	147,5	10	20
4 M Australia DGPO	86	147,5	10	-
6 M	86	192,5	11	20

### 4. TECHNICAL CHARACTERISTICS

#### ■ 4.1 Mechanical characteristics

Impact test: IK 04

#### ■ 4.2 Material characteristics

Halogen-free

UV resistant

Self-extinguishing:

650°C/30 s for the other insulating components.

#### ■ 4.3 Climatic characteristics

Storage temperature: - 10°C to + 70°C

Use temperature: - 5°C to + 50°C

### 5. CLEANING

Surface cleaning with a cloth.

Do not use: acetone, tar remover, trichloroethylene.

**Caution:** A preliminary test should be carried out if other specific cleaning products are to be used.