

MASTER Value LEDtube T8



MAS LEDtube VLE 1500mm HO 20.5W 830 T8

A high-performance LED solution, the professional MASTER Value LED tube is ideal for replacing T8 fluorescent lamps using EM ballast or installing directly on the mains. This product provides an optimal combination of value and performance – for use in all general lighting, office, industry, retail, and hospitality applications. The unique design of this LED T8 tube light offers wide compatibility, safety and fast installation, as well as instant energy savings.

Product data

General Information	
Cap-Base	G13 [Medium Bi-Pin Fluorescent]
Nominal lifetime	60,000 hour(s)
Switching Cycle	200,000
Lighting Technology	LED
Flux measurement reference	Sphere
Light Technical	
Color Code	830 [CCT of 3000K]
Beam Angle (Nom)	190 degree(s)
Luminous Flux	2,900 lm
Color Designation	White (WH)
Correlated Color Temperature (Nom)	3000 K
Luminous Efficacy (rated) (Nom)	141.00 lm/W
Color Consistency	<6
Color rendering index (CRI)	80
LLMF At End Of Nominal Lifetime (Nom)	70 %
Photobiological safety according to EN 62471	RG0

Operating and Electrical	
Line Frequency	50 to 60 Hz
Input Frequency	50 to 60 Hz
Power Consumption	20.5 W
Lamp Current (Max)	97 mA
Lamp Current (Min)	89 mA
Starting Time (Nom)	0.5 s
Warm-up time to 60% light	0.5 s
Power Factor (Fraction)	0.9
Voltage (Nom)	220-240 V
Ballast Compatibility	EM/Mains
LED alternative to fluorescent lamp power	58 W
Inrush current at mains	8.2
Max. lamp no. on MCB B type 10A - Mains	75
Max. lamp no. on MCB B type 10A – EM ballast without Compensation Capacitor.	75
Max. lamp no. on MCB B type 10A – EM ballast with Compensation Capacitor.	10
Max. lamp no. on MCB B type 16A - Mains	120

MASTER Value LEDtube T8

Max. lamp no. on MCB B type 16A – EM ballast without Compensation Capacitor.	120
Max. lamp no. on MCB B type 16A – EM ballast with Compensation Capacitor.	16

Temperature

T-Case Maximum (Nom)	65 °C
----------------------	-------

Controls and Dimming

Dimmable	No
----------	----

Mechanical and Housing

Bulb Finish	Frosted
Bulb Material	Glass
Product Length	1,500 mm
Bulb Shape	T8
Net Weight (Piece)	0.270 kg

Approval and Application

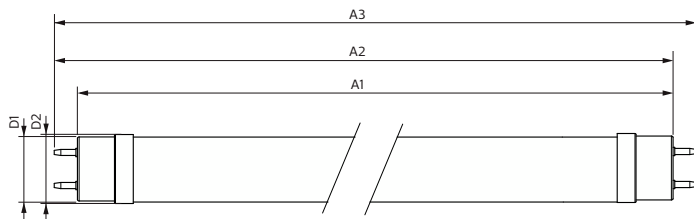
Energy Efficiency Class	D
Energy Saving Product	Yes
Approval Marks	RoHS compliance TUV CE marking KEMA Keur certificate

Energy Consumption kWh/1000 h	21 kWh
EPREL Registration Number	1095868
CE mark	Yes
EU RoHS compliant	Yes
Flickering value (PstLM) - Flickering value as per EN 61000-3-3	1
Stroboscopic effect visibility measure (SVM)	0.4
Ambient temperature range	-20 °C to 45 °C

Product Data

Order product name	MAS LEDtube VLE 1500mm HO 20.5W 830 T8
Full product name	MAS LEDtube VLE 1500mm HO 20.5W 830 T8
Full product code	871869964691200
Order code	929002021702
Material Nr. (12NC)	929002021702
Numerator - Quantity Per Pack	1
EAN/UPC - Product/Case	8718699646912
Numerator - Packs per outer box	10
EAN/UPC - Case	8718699646929

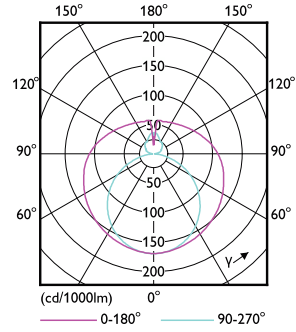
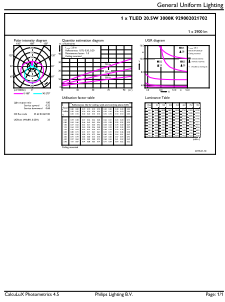
Dimensional drawing



Product	D1	D2	A1	A2	A3
MAS LEDtube VLE 1500mm HO	25.8 mm	28 mm	1,498.7 mm	1,505.8 mm	1,512.9 mm
20.5W 830 T8					

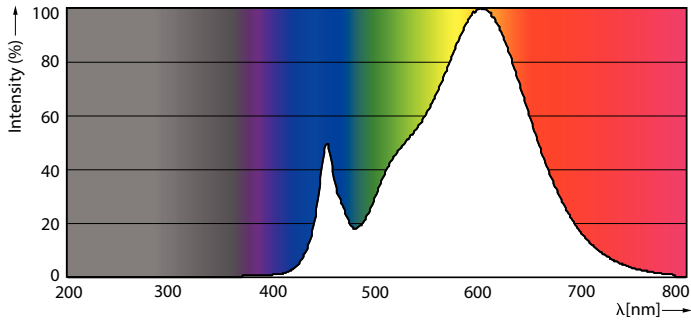
MASTER Value LEDtube T8

Photometric data



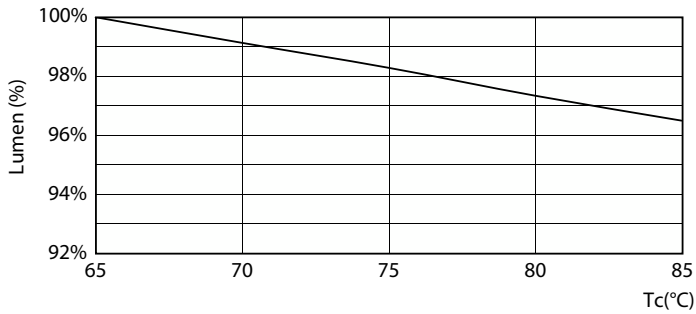
General uniform lighting - MAS LEDtube VLE 1500mm HO 20.5W 830 T8

Light Distribution Diagram - MAS LEDtube VLE 1500mm HO 20.5W 830 T8

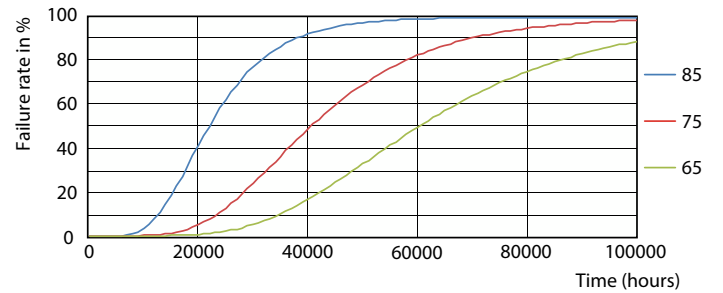


Spectral Power Distribution Colour - MAS LEDtube VLE 1500mm HO 20.5W 830 T8

Lifetime



Lumen Maintenance Diagram - MAS LEDtube VLE 1500mm HO 20.5W 830 T8



FailureRate

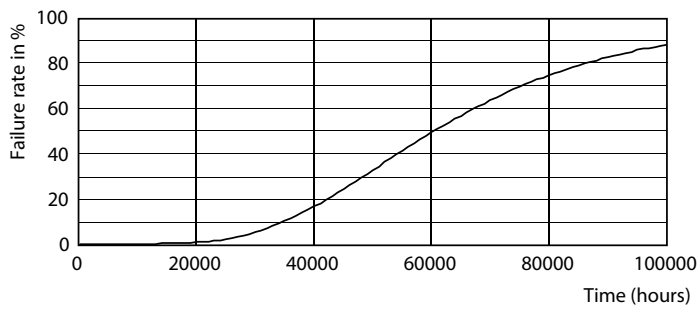
MASTER Value LEDtube T8

Lifetime



LifetimeVsTc

Lumen Maintenance Diagram - MAS LEDtube VLE 1500mm HO 20.5W 830 T8



Life Expectancy Diagram

