



CorePro LED PLL



CorePro LED Urban PLL Mains 13W 840

Philips CorePro LED PLL is the ideal uplamping solution for downlights & luminaires in a wide range of general lighting applications. It integrates a LED light source into a traditional fluorescent form factor to offer superb energy savings over a lifetime that's twice as long as fluorescent alternatives.

Product data

General Information	
Cap-Base	2G11
Nominal lifetime	30,000 hour(s)
Switching Cycle	200,000
Lighting Technology	LED
Flux measurement reference	Sphere
Light Technical	
Color Code	840 [CCT of 4000K]
Beam Angle (Nom)	360 degree(s)
Luminous Flux	1,600 lm
Color Designation	Cool White (CW)
Correlated Color Temperature (Nom)	4000 K
Luminous Efficacy (rated) (Nom)	123 lm/W
Color Consistency	<6
Color rendering index (CRI)	80
LLMF At End Of Nominal Lifetime (Nom)	70 %
Photobiological safety according to EN 62471	RGO
Operating and Electrical	
Input Frequency	50 to 60 Hz
Power Consumption	13 W
Lamp Current (Nom)	70 mA

Starting Time (Nom)	0.5 s
Warm-up time to 60% light	0.5 s
Power Factor (Fraction)	0.9
Voltage (Nom)	220-240 V
Ballast Compatibility	Mains
LED alternative to fluorescent lamp power	24 W
Inrush current at mains	3.4
Max. lamp no. on MCB B type 10A - Mains	140
Max. lamp no. on MCB B type 10A – EM ballast without Compensation Capacitor.	-
Max. lamp no. on MCB B type 10A – EM ballast with Compensation Capacitor.	-
Max. lamp no. on MCB B type 16A - Mains	225
Max. lamp no. on MCB B type 16A – EM ballast without Compensation Capacitor.	-
Max. lamp no. on MCB B type 16A – EM ballast with Compensation Capacitor.	-
Temperature	
T-Case Maximum (Nom)	60 °C

CorePro LED PLL

Controls and Dimming

Dimmable	No
----------	----

Mechanical and Housing

Bulb Finish	Clear
Bulb Material	Plastic
Product Length	315 mm
Bulb Shape	PL-L
Net Weight (Piece)	0.125 kg

Approval and Application

Energy Efficiency Class	E
Energy Saving Product	Yes
Approval Marks	RoHS compliance CE marking KEMA Keur certificate
Energy Consumption kWh/1000 h	13 kWh
EPREL Registration Number	1826743
CE mark	Yes
EU RoHS compliant	Yes

Flickering value (PstLM) - Flickering value as per EN 61000-3-3	1
-----------------------------------------------------------------	---

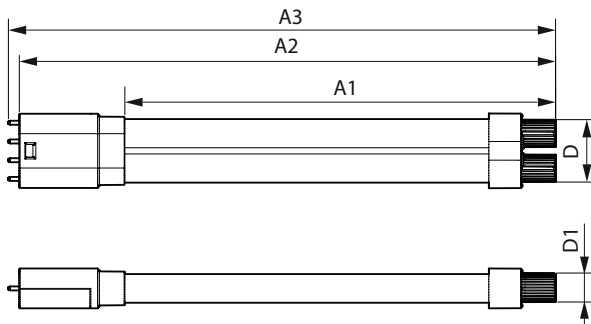
Stroboscopic effect visibility measure (SVM)	0.4
----------------------------------------------	-----

Ambient temperature range	-30 to +45 °C
---------------------------	---------------

Product Data

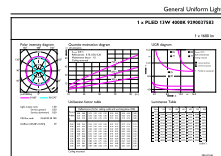
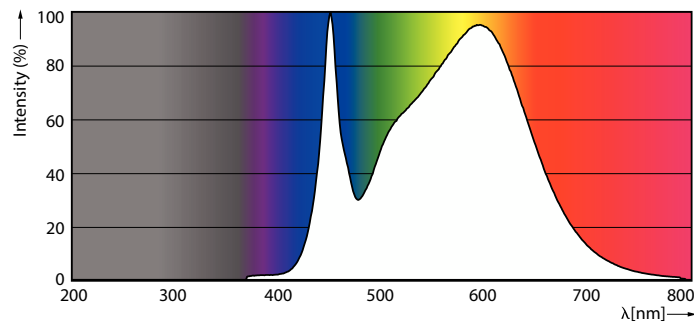
Order product name	CorePro LED Urban PLL Mains 13W 840
Full product name	CorePro LED Urban PLL Mains 13W 840
Full product code	872016928718100
Order code	929003758302
Material Nr. (12NC)	929003758302
Numerator - Quantity Per Pack	1
EAN/UPC - Product/Case	8720169287181
Numerator - Packs per outer box	10
EAN/UPC - Case	8720169287198

Dimensional drawing



Product	D1	D2	A1	A2	A3
CorePro LED Urban PLL Mains 13W 840	17 mm	37 mm	253 mm	315 mm	321 mm

Photometric data

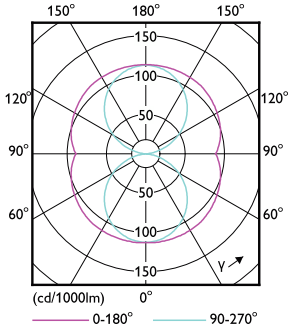


Spectral Power Distribution Colour - CorePro LED Urban PLL Mains 13W 840

General uniform lighting - CorePro LED Urban PLL Mains 13W 840

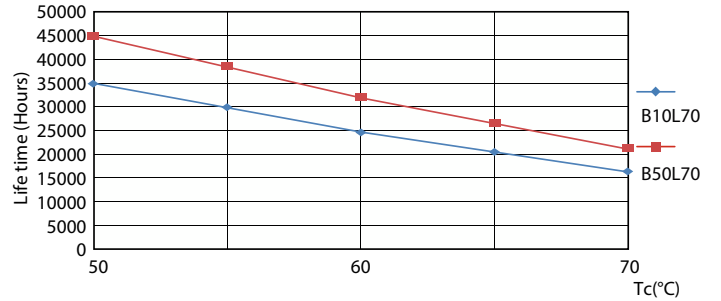
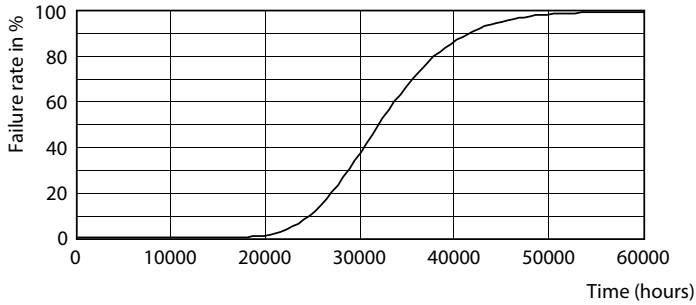
CorePro LED PLL

Photometric data

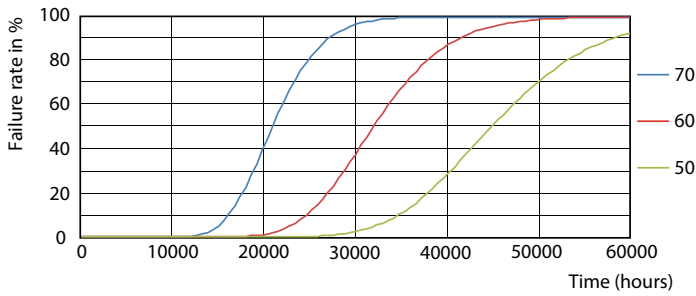


Light Distribution Diagram - CorePro LED Urban PLL Mains 13W 840

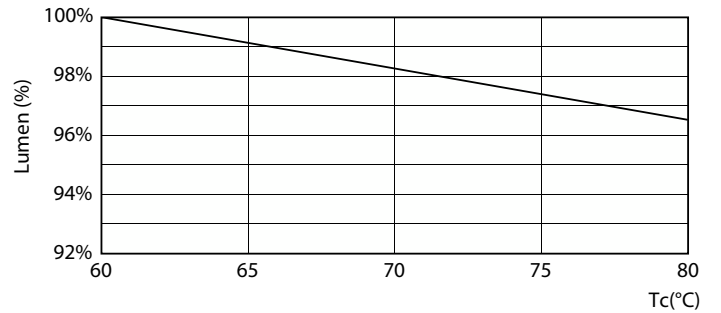
Lifetime



Life Expectancy Diagram



LifetimeVsTc

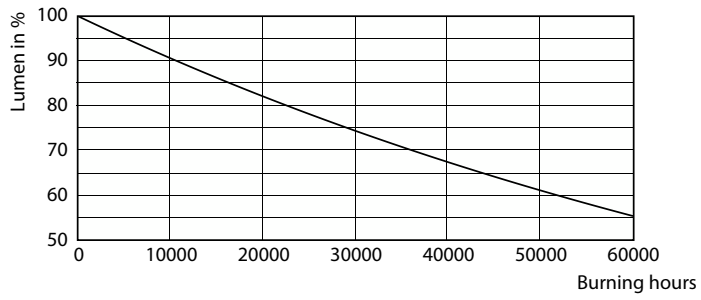


FailureRate

Lumen Maintenance Diagram - CorePro LED Urban PLL Mains 13W 840

CorePro LED PLL

Lifetime



Lumen Maintenance Diagram - CorePro LED Urban PLL Mains 13W 840

