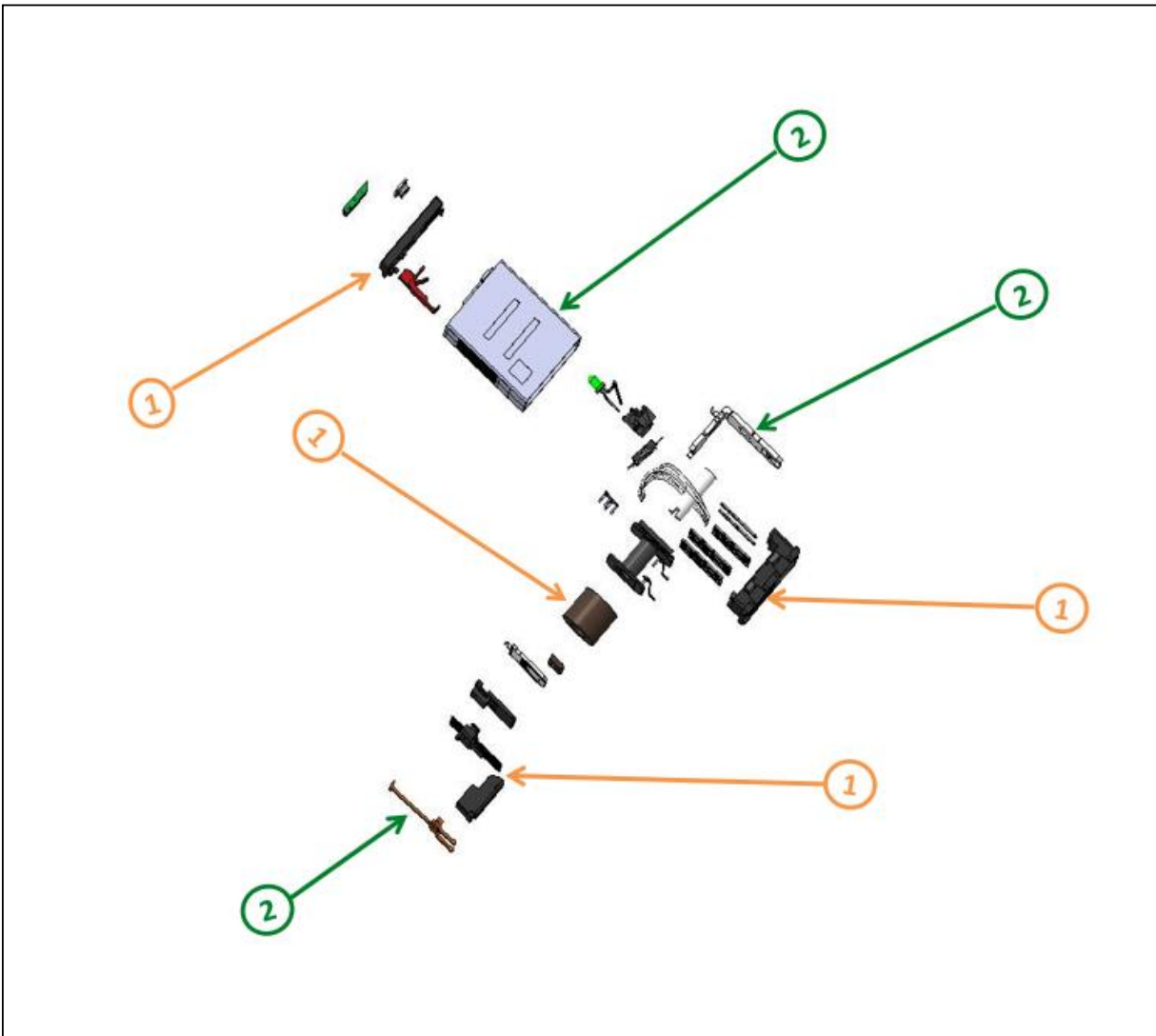


Product End of Life Instructions

RXM.AB Miniature Plug-in Relay



End of Life Instructions



Recommendation	Number on drawing	Component / Material	Weight (in g)	Comment
To be depolluted	1	Plastic Parts	13.07	
To be dismantled	2	Metal Parts	22.23	

Product description

Manufacturer identification	Schneider Electric Industries SAS
Brand name	Schneider Electric
Product function	Relays are the switches which aim at closing and opening the circuits electronically as well as electromechanically. It controls the opening and closing of the circuit contacts of an electronic circuit

Product reference	RXM4AB2P7
Additional similar product references	RXM2AB1ED,RXM2AB2ED,RXM4AB2P7PVS,RXM2AB1FD,RXM2AB1E7,RXM2AB1MD,RXM4SOC120A,RXM2AB1GD,RXM2AB1HD,RXM4SOC24D,RXM2AB1G7,RXM4GB3ED,RXM2AB1U7,RXM4GB3P7,RXM4GB3E7,RXM021BN,RXM021FP,RXM021RB,RXM040W,RXM041BN7,RXM041FU7,RXM2AB2BDBB,RXM2AB3B7,RXM2AB3BD,RXM2AB3E7,RXM2AB3F7,RXM2AB3FD,RXM2AB3JD,RXM2AB3P7,RXM2CB1B7,RXM2CB1BD,RXM2CB1E7,RXM2CB1JD,RXM2CB1P7,RXM2CB2B7,RXM2CB2BD,RXM2CB2E7,RXM2CB2ED,RXM2CB2F7,RXM2CB2FD,RXM2CB2JD,RXM2CB2P7,RXM2LB1B7,RXM2LB1BD,RXM2LB1ED,RXM2LB1F7,RXM2LB1JD,RXM2LB1P7,RXM2LB2B7,RXM2LB2BD,RXM2LB2CD,RXM2LB2ED,RXM2LB2F7,RXM2LB2FD,RXM2LB2JD,RXM2LB2P7,RXM2NB3B7,RXM2NB3BD,RXM2NB3F7,RXM2NB3FD,RXM2NB3JD,RXM2NB3MD,RXM2NB3P7,RXM3AB1B7,RXM3AB1BD,RXM3AB1E7,RXM3AB1ED,RXM3AB1F7,RXM3AB1FD,RXM3AB1JD,RXM3AB1P7,RXM3AB2B7,RXM3AB2BD,RXM3AB2E7,RXM3AB2ED,RXM3AB2F7,RXM3AB2FD,RXM3AB2JD,RXM3AB2P7,RXM4AB1JDTQ,RXM4AB1P7TQ,RXM4AB2B7TQ,RXM2AB1ND,RXM2AB1P7TQ,RXM2AB1UD,RXM2AB2B7PVM,RXM2AB2B7PVS,RXM2AB2BDPVM,RXM2AB2BDPVS,RXM2AB2P7PVM,,RXM4AB3B7,RXM4AB3BD,RXM4AB3E7,RXM4AB3ED,RXM4AB3F7,RXM4AB3FD,RXM4AB3JD,RXM4AB3P7,RXM4CB1B7,RXM4CB1BD,RXM4CB1FD,RXM4CB1JD,RXM4CB1MD,RXM4CB1P7,RXM4CB2B7,RXM4CB2BD,RXM4CB2E7,RXM4CB2ED,RXM4CB2F7,RXM4CB2FD,RXM4CB2JD,RXM4CB2P7,RXM4GB1B7,RXM4GB1BD,RXM4GB1E7,RXM4GB1ED,RXM4GB1F7,RXM4GB1FD,RXM4GB1JD,RXM4GB1P7,RXM4GB2B7,RXM4GB2BD,RXM4GB2E7,RXM4GB2ED,RXM4GB2F7,RXM4GB2FD,RXM4GB2GD,RXM4GB2JD,RXM4GB2MD,RXM4GB2ND,RXM4GB2P7,RXM4GB2U7,RXM4GB3B7,RXM4GB3BD,RXM2AB2P7PVS,RXM2AB2P7TQ,RXM4GB3F7,RXM4GB3FD,RXM4GB3JD,RXM4AB1B7PVM,RXM4LB1B7,RXM4LB1BD,RXM4LB1ED,RXM4LB1F7,RXM4LB1JD,RXM4LB1P7,RXM4LB2B7,RXM4LB2BD,RXM4LB2CD,RXM4LB2ED,RXM4LB2F7,RXM4LB2FD,RXM4LB2JD,RXM4LB2P7,RXM4NB3B7,RXM4NB3BD,RXM4NB3F7,RXM4NB3FD,RXM4NB3JD,RXM4NB3MD,RXM4NB3P7,RXM4AB1B7PVS,RXM4AB1BDPVM,RXM4AB1BDPVS,RXM4AB1P7PVM,RXM4AB1P7PVS,RXM4AB2B7PVM,RXM4AB2B7PVS,RXM4AB2BDBB,RXM4AB2BDPVM,RXM4AB2BDPVS,RXM4AB2BDSC270,RXM4AB2P7PVM
Total representative product mass	36.08 g
Representative product dimensions	H 47.75 mm x L 27.2 mm x D 21 mm
Accessories	No special accessories required
Date of information release	12/2021



Additional information

Legal information	This product family is in the scope of European Union directive 2012/19/EU on Waste Electrical and Electronic Equipment (WEEE). The product family must be disposed according to the legislation of the country. This document is intended for use by end of life recyclers or treatment facilities. It provides the basic information to assure an appropriate end of life treatment for the components and materials of the product.	
In case of special transportation: transportation method	No special transportation needed	
Recyclability potential	55%	Based on "ECO'DEEE recyclability and recoverability calculation method" (version V1, 20 Sep. 2008 presented to the French Agency for Environment and Energy Management: ADEME).

Schneider Electric Industries SAS
Country Customer Care Center
<http://www.schneider-electric.com/contact>
35, rue Joseph Monier
CS 30323
F- 92506 Rueil Malmaison Cedex
RCS Nanterre 954 503 439
Capital social 896 313 776 €

www.schneider-electric.com

ENVEOLI2106019_V1

Published by Schneider Electric

© 2019 - Schneider Electric – All rights reserved

12/2021