



MASTER LEDtube InstantFit HF T5



MAS LEDtube HF 600mm HE 7W 865 T5

The Philips MASTER LEDtube integrates a LED light source into a traditional fluorescent form factor. Its unique design creates a perfectly uniform visual appearance, which cannot be distinguished from traditional fluorescent. These T5 lighting tubes are the right choice for absolute performance and are designed to stand up to everyday conditions. Unparalleled savings thanks to low energy consumption and an exceptionally long lifetime make these T5 LED tubes the choice for every demanding application.

Product data

| General Information | | Photobiological safety according to EN 62471 | |
|---------------------------------------|--------------------|--|----------------|
| Cap-Base | G5 | | RG0 |
| Nominal lifetime | 60,000 hour(s) | Operating and Electrical | |
| Switching Cycle | 50,000 | Input Frequency | 30K to 100K Hz |
| Lighting Technology | LED | Power Consumption | 7 W |
| Flux measurement reference | Sphere | Lamp Current (Max) | 350 mA |
| Light Technical | | Lamp Current (Min) | 150 mA |
| Color Code | 865 [CCT of 6500K] | Starting Time (Nom) | 0.5 s |
| Beam Angle (Nom) | 200 degree(s) | Warm-up time to 60% light | 0.5 s |
| Luminous Flux | 1,050 lm | Power Factor (Fraction) | 0.92 |
| Color Designation | Cool Daylight | Voltage (Nom) | 40-70 V |
| Correlated Color Temperature (Nom) | 6500 K | Ballast Compatibility | HF |
| Luminous Efficacy (rated) (Nom) | 150 lm/W | LED alternative to fluorescent lamp power | 14 W |
| Color Consistency | <6 | Inrush current at mains | - |
| Color rendering index (CRI) | 80 | Max. lamp no. on MCB B type 10A - Mains | - |
| LLMF At End Of Nominal Lifetime (Nom) | 70 % | Max. lamp no. on MCB B type 10A – EM ballast without Compensation Capacitor. | - |

MASTER LEDtube InstantFit HF T5

| | |
|--|---|
| Max. lamp no. on MCB B type 10A – EM ballast with Compensation Capacitor. | - |
| Max. lamp no. on MCB B type 16A – Mains | - |
| Max. lamp no. on MCB B type 16A – EM ballast without Compensation Capacitor. | - |
| Max. lamp no. on MCB B type 16A – EM ballast with Compensation Capacitor. | - |

Temperature

| | |
|----------------------|-------|
| T-Case Maximum (Nom) | 50 °C |
|----------------------|-------|

Controls and Dimming

| | |
|----------|-----------------------------------|
| Dimmable | Yes - Check ballast compatibility |
|----------|-----------------------------------|

Mechanical and Housing

| | |
|--------------------|----------|
| Bulb Finish | Frosted |
| Bulb Material | Glass |
| Product Length | 600 mm |
| Bulb Shape | T5 |
| Net Weight (Piece) | 0.085 kg |

Approval and Application

| | |
|-------------------------|---------------------------------------|
| Energy Efficiency Class | D |
| Energy Saving Product | Yes |
| Approval Marks | RoHS compliance KEMA Keur certificate |

| | |
|-------------------------------|---------------|
| Energy Consumption kWh/1000 h | 7 kWh |
| EPREL Registration Number | 1936618 |
| CE mark | Yes |
| EU RoHS compliant | Yes |
| Ambient temperature range | -20 to +45 °C |

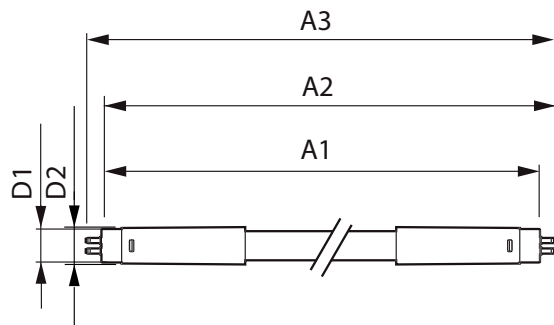
Application Conditions

| | |
|-------------------------------------|-----|
| can it be used in closed luminaires | Yes |
|-------------------------------------|-----|

Product Data

| | |
|---------------------------------|-----------------------------------|
| Order product name | MAS LEDtube HF 600mm HE 7W 865 T5 |
| Full product name | MAS LEDtube HF 600mm HE 7W 865 T5 |
| Full product code | 872016930970800 |
| Order code | 929003795302 |
| Material Nr. (12NC) | 929003795302 |
| Numerator - Quantity Per Pack | 1 |
| EAN/UPC - Product/Case | 8720169309708 |
| Numerator - Packs per outer box | 10 |
| EAN/UPC - Case | 8720169309715 |

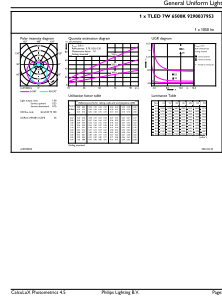
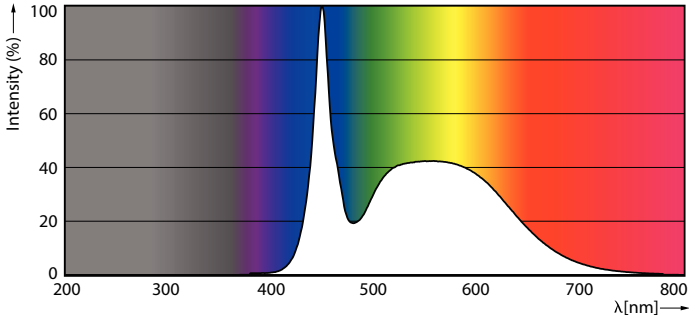
Dimensional drawing



| Product | D1 | D2 | A1 | A2 | A3 |
|-----------------------------------|---------|-------|--------|--------|--------|
| MAS LEDtube HF 600mm HE 7W 865 T5 | 15.7 mm | 19 mm | 549 mm | 556 mm | 563 mm |

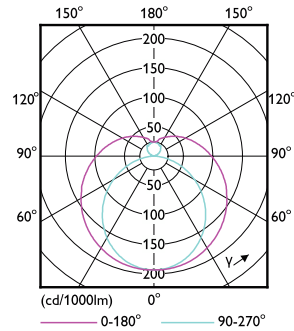
MASTER LEDtube InstantFit HF T5

Photometric data



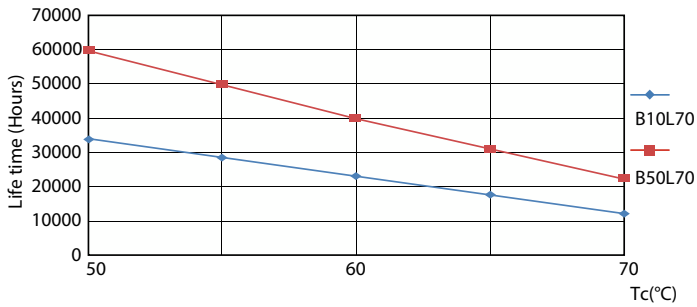
Spectral Power Distribution Colour - MAS LEDtube HF 600mm HE 7W 865 T5

General uniform lighting - MAS LEDtube HF 600mm HE 7W 865 T5

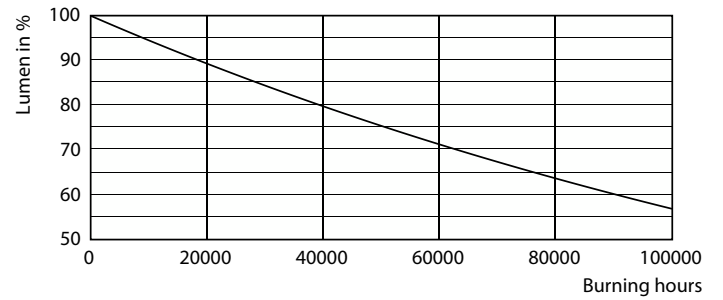


Light Distribution Diagram - MAS LEDtube HF 600mm HE 7W 865 T5

Lifetime



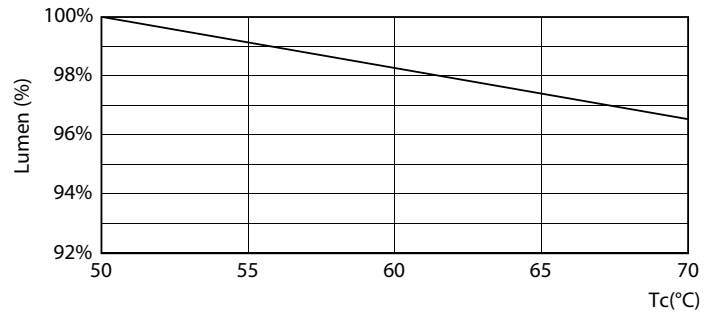
LEDtube 60K 5070 LifetimeVsTc-LED



Lumen Maintenance Diagram - MAS LEDtube HF 600mm HE 7W 865 T5

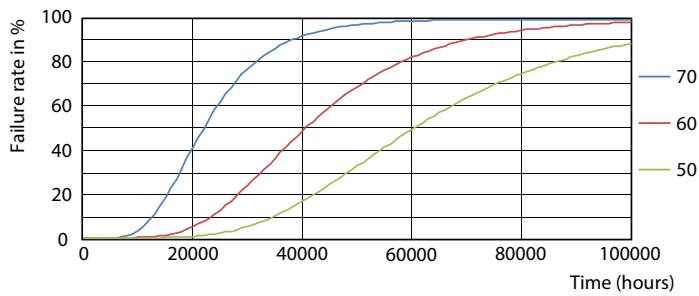
MASTER LEDtube InstantFit HF T5

Lifetime



Life Expectancy Diagram

Lumen Maintenance Diagram - MAS LEDtube HF 600mm HE 7W 865 T5



LEDtube 60K 5070 FailureRate-LED

