



CorePro LEDtube InstantFit HF T5



CorePro LEDtube HF 1200mm HO 26.7W 840T5

CorePro LEDtube InstantFit HF T5 is the quick and easy way to replace T5 fluorescent tubes with a fast payback time. Designed with industry leading ballast compatibility, the product is ideal for your everyday lighting jobs. With simply plug-and-play installation, it improves energy efficiency immediately and lasts for longer than conventional T5.

Product data

General Information	
Cap-Base	G5
Nominal lifetime	50,000 hour(s)
Switching Cycle	50,000
Lighting Technology	LED
Flux measurement reference	Sphere
Light Technical	
Color Code	840 [CCT of 4000K]
Beam Angle (Nom)	200 degree(s)
Luminous Flux	3,900 lm
Color Designation	Cool White (CW)
Correlated Color Temperature (Nom)	4000 K
Luminous Efficacy (rated) (Nom)	146 lm/W
Color Consistency	<6
Color rendering index (CRI)	80
LLMF At End Of Nominal Lifetime (Nom)	70 %
Photobiological safety according to EN 62471	RG0

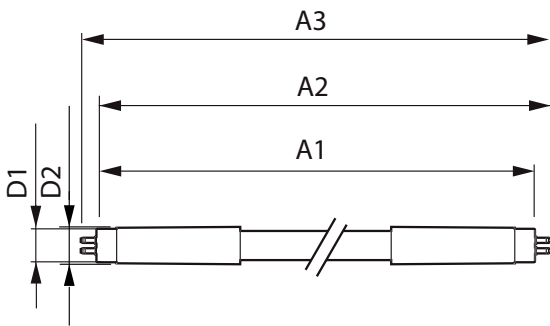
Operating and Electrical	
Input Frequency	30K to 60K Hz
Power Consumption	26.7 W
Lamp Current (Max)	620 mA
Lamp Current (Min)	300 mA
Starting Time (Nom)	0.5 s
Warm-up time to 60% light	0.5 s
Power Factor (Fraction)	0.9
Voltage (Nom)	20-90 V
Ballast Compatibility	HF
LED alternative to fluorescent lamp power	54 W
Inrush current at mains	-
Max. lamp no. on MCB B type 10A - Mains	-
Max. lamp no. on MCB B type 10A – EM ballast without Compensation Capacitor.	-
Max. lamp no. on MCB B type 10A – EM ballast with Compensation Capacitor.	-
Max. lamp no. on MCB B type 16A - Mains	-
Max. lamp no. on MCB B type 16A – EM ballast without Compensation Capacitor.	-

CorePro LEDtube InstantFit HF T5

Max. lamp no. on MCB B type 16A – EM ballast with Compensation Capacitor.	-
Temperature	
T-Case Maximum (Nom)	45 °C
Controls and Dimming	
Dimmable	No
Mechanical and Housing	
Bulb Finish	Frosted
Bulb Material	Glass
Product Length	1,200 mm
Bulb Shape	T5
Net Weight (Piece)	0.160 kg
Approval and Application	
Energy Efficiency Class	D
Energy Saving Product	Yes
Approval Marks	RoHS compliance KEMA Keur certificate

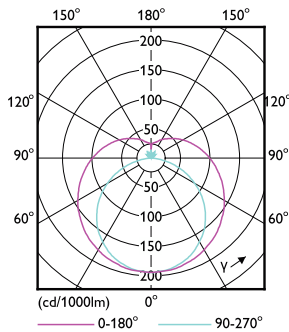
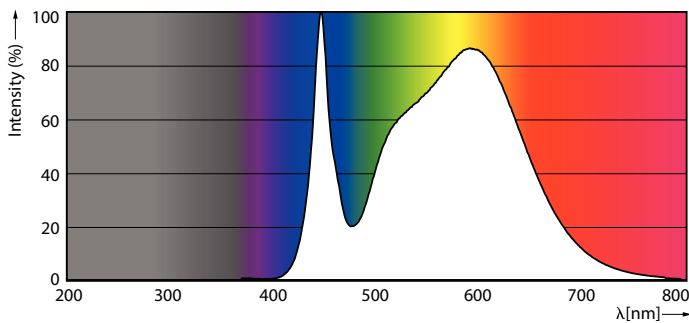
Energy Consumption kWh/1000 h	27 kWh
EPREL Registration Number	1857691
CE mark	Yes
EU RoHS compliant	Yes
Ambient temperature range	-20 to +45 °C
Product Data	
Order product name	CorePro LEDtube HF 1200mm HO 26.7W 840T5
Full product name	CorePro LEDtube HF 1200mm HO 26.7W 840T5
Full product code	872016929560500
Order code	929003775102
Material Nr. (12NC)	929003775102
Numerator - Quantity Per Pack	1
EAN/UPC - Product/Case	8720169295605
Numerator - Packs per outer box	10
EAN/UPC - Case	8720169295612

Dimensional drawing



Product	D1	D2	A1	A2	A3
CorePro LEDtube HF 1200mm HO 26.7W 840T5	15.5 mm	16/19 mm	1,149 mm	1,156 mm	1,163 mm

Photometric data

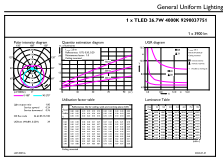


Spectral Power Distribution Colour - CorePro LEDtube HF 1200mm HO 26.7W 840T5

Light Distribution Diagram - CorePro LEDtube HF 1200mm HO 26.7W 840T5

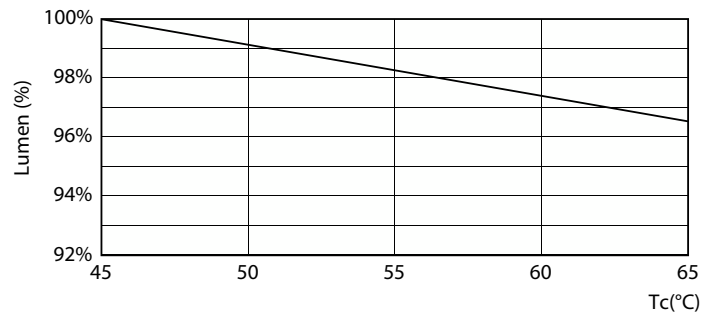
CorePro LEDtube InstantFit HF T5

Photometric data

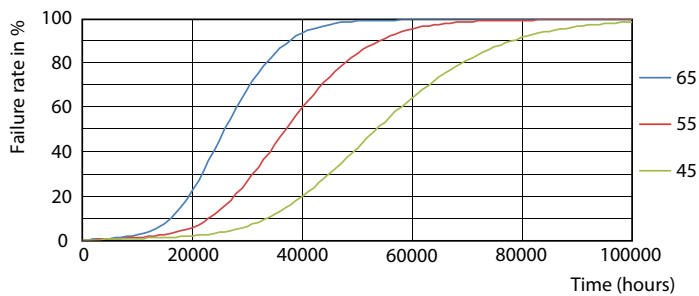


General uniform lighting - CorePro LEDtube HF 1200mm HO 26.7W 840T5

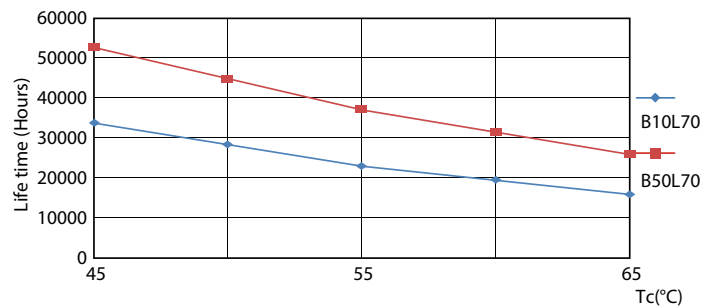
Lifetime



Life Expectancy Diagram



Lumen Maintenance Diagram - CorePro LEDtube HF 1200mm HO 26.7W 840T5

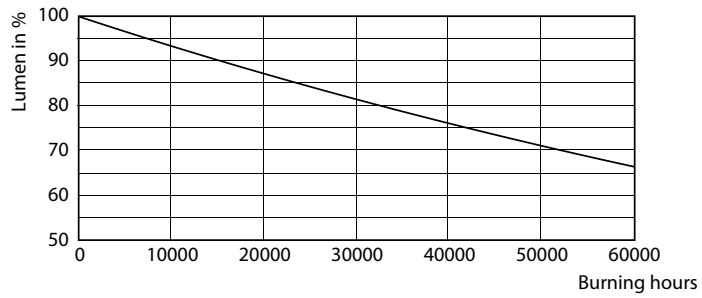


FailureRate

LifetimeVsTc

CorePro LEDtube InstantFit HF T5

Lifetime



Lumen Maintenance Diagram - CorePro LEDtube HF 1200mm HO 26.7W
840T5

