



MASTER LEDtube InstantFit HF T5



MAS LEDtube HF 900mm HE 11.5W 840 T5

The Philips MASTER LEDtube integrates a LED light source into a traditional fluorescent form factor. Its unique design creates a perfectly uniform visual appearance, which cannot be distinguished from traditional fluorescent. These T5 lighting tubes are the right choice for absolute performance and are designed to stand up to everyday conditions. Unparalleled savings thanks to low energy consumption and an exceptionally long lifetime make these T5 LED tubes the choice for every demanding application.

Product data

General Information		Photobiological safety according to EN 62471	
Cap-Base	G5	RG0	
Nominal lifetime	60,000 hour(s)	Operating and Electrical	
Switching Cycle	50,000	Line Frequency	30K to 100K Hz
Lighting Technology	LED	Input Frequency	30K to 100K Hz
Flux measurement reference	Sphere	Power Consumption	11.5 W
Light Technical		Lamp Current (Max)	420 mA
Color Code	840 [CCT of 4000K]	Lamp Current (Min)	130 mA
Beam Angle (Nom)	200 degree(s)	Starting Time (Nom)	0.5 s
Luminous Flux	1,700 lm	Warm-up time to 60% light	0.5 s
Color Designation	Cool White (CW)	Power Factor (Fraction)	0.9
Correlated Color Temperature (Nom)	4000 K	Voltage (Nom)	60-100 V
Luminous Efficacy (rated) (Nom)	147 lm/W	Ballast Compatibility	HF
Color Consistency	<6	LED alternative to fluorescent lamp power	21 W
Color rendering index (CRI)	80	Inrush current at mains	-
LLMF At End Of Nominal Lifetime (Nom)	70 %	Max. lamp no. on MCB B type 10A - Mains	-
		Max. lamp no. on MCB B type 10A – EM ballast without Compensation Capacitor.	-

MASTER LEDtube InstantFit HF T5

Max. lamp no. on MCB B type 10A – EM ballast with Compensation Capacitor.	-
Max. lamp no. on MCB B type 16A – Mains	-
Max. lamp no. on MCB B type 16A – EM ballast without Compensation Capacitor.	-
Max. lamp no. on MCB B type 16A – EM ballast with Compensation Capacitor.	-

Temperature

T-Case Maximum (Nom)	55 °C
----------------------	-------

Controls and Dimming

Dimmable	Yes - Check ballast compatibility
----------	-----------------------------------

Mechanical and Housing

Bulb Finish	Frosted
Bulb Material	Glass
Product Length	900 mm
Bulb Shape	T5
Net Weight (Piece)	0.115 kg

Approval and Application

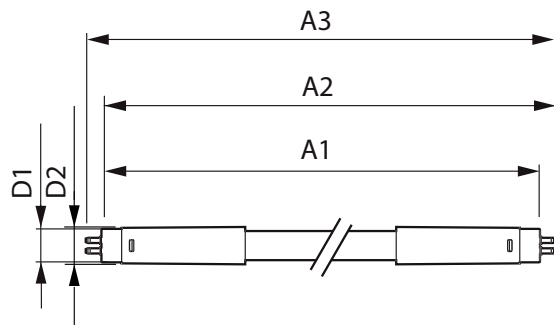
Energy Efficiency Class	D
-------------------------	---

Energy Saving Product	Yes
Approval Marks	RoHS compliance KEMA Keur certificate
Energy Consumption kWh/1000 h	12 kWh
EPREL Registration Number	1407664
CE mark	Yes
EU RoHS compliant	Yes
Ambient temperature range	-20 °C to 45 °C

Product Data

Order product name	MAS LEDtube HF 900mm HE 11.5W 840 T5
Full product name	MAS LEDtube HF 900mm HE 11.5W 840 T5
Full product code	872016916321800
Order code	929003596902
Material Nr. (12NC)	929003596902
Numerator - Quantity Per Pack	1
EAN/UPC - Product/Case	8720169163218
Numerator - Packs per outer box	10
EAN/UPC - Case	8720169163225

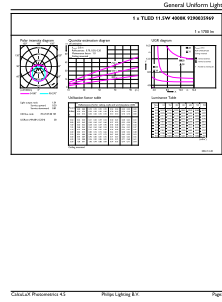
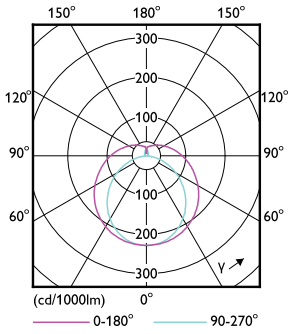
Dimensional drawing



Product	D1	D2	A1	A2	A3
MAS LEDtube HF 900mm HE 11.5W 840 T5	15.5 mm	16/19 mm	849 mm	856 mm	863 mm

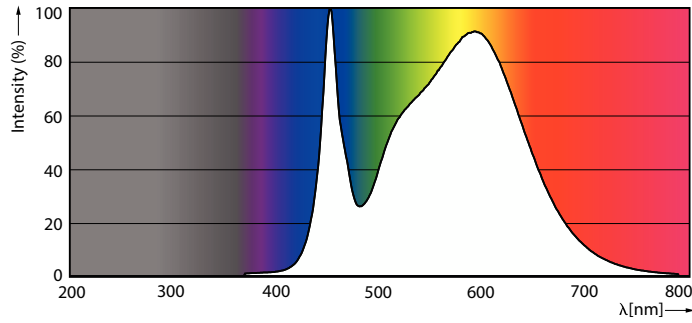
MASTER LEDtube InstantFit HF T5

Photometric data



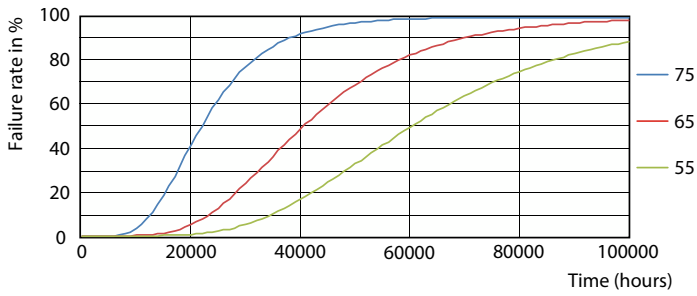
Light Distribution Diagram - MAS LEDtube HF 900mm HE 11.5W 840 T5

General uniform lighting - MAS LEDtube HF 900mm HE 11.5W 840 T5

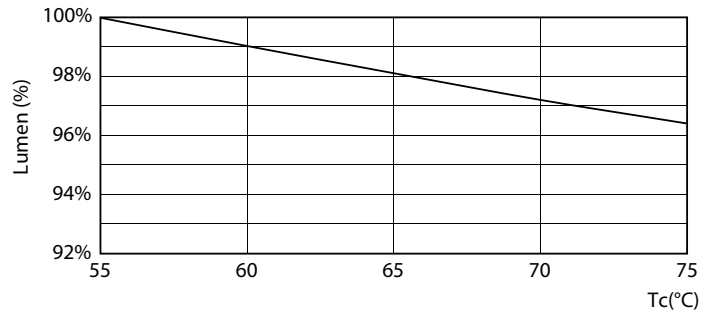


Spectral Power Distribution Colour - MAS LEDtube HF 900mm HE 11.5W 840 T5

Lifetime



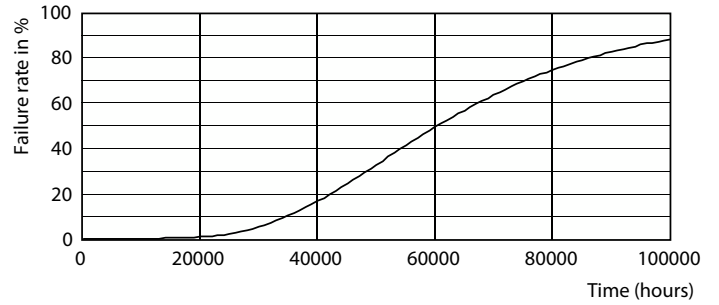
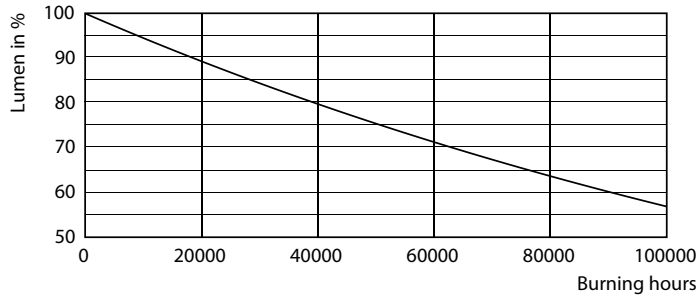
FailureRate



Lumen Maintenance Diagram - MAS LEDtube HF 900mm HE 11.5W 840 T5

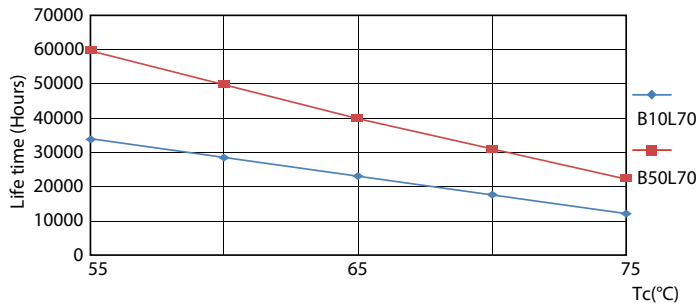
MASTER LEDtube InstantFit HF T5

Lifetime



Lumen Maintenance Diagram - MAS LEDtube HF 900mm HE 11.5W 840 T5

Life Expectancy Diagram



LifetimeVsTc

