

## LED-Permanent Light 280 / Accessories

### Bracket BK



**Part No.:** 975.883.06

#### MECHANICAL DATA

|                       |        |
|-----------------------|--------|
| Length                | 153 mm |
| Width                 | 126 mm |
| Height                | 90 mm  |
| Materials             | PC/ABS |
| Housing colour        | Black  |
| Weight with packaging | 146 g  |
| Product weight        | 146 g  |

#### APPROVAL DATA

|                               |                                |
|-------------------------------|--------------------------------|
| Conforms with CE              | No                             |
| Conforms with RoHS directive  | Fulfills substance restriction |
| WEEE                          | No                             |
| Conforms with ATEX-directive  | No                             |
| Conforms with CCC             | No                             |
| Conforms with UL              | No                             |
| Conforms with FCC             | No                             |
| Conforms with IC              | No                             |
| EAC certificate available     | No                             |
| Conforms with UKCA (Importer) | No                             |
| Conforms with AS-I            | No                             |
| ICAO Certification            | No                             |
| Conforms with DNV             | No                             |
| Conforms with RoHS CN         | No                             |

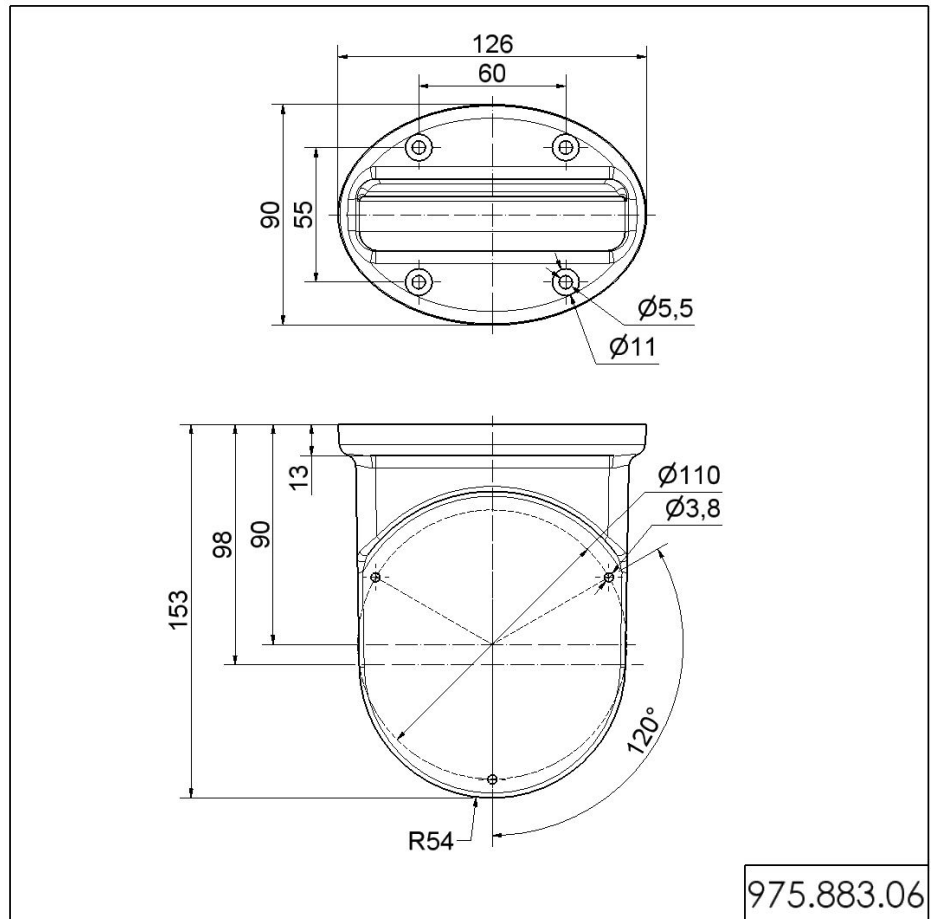


For additional installation and mounting information, refer to the appropriate user guide at [www.werma.com](http://www.werma.com). This printed copy is for information only and is subject to alteration.

LED-Permanent Light 280 / Accessories

**Bracket BK**

**DRAWING**



For additional installation and mounting information, refer to the appropriate user guide at [www.werma.com](http://www.werma.com). This printed copy is for information only and is subject to alteration.