



# MASTER UltraEfficient LED candles and lusters

## MAS LEDCandleND2.3-40W E14 840 B35CL GUE

This is the most efficient LED candle from Philips brand. 210lm/W helps to concrete the company statement of sustainability. 50000 hour lifetime helps to extend the replacement cycle to reduce the waste. This is not only the high SPEC product, but also keep the light quality of Philips brand

### Product data

General Information	
Cap-Base	E14 [E14]
Nominal lifetime	50,000 hour(s)
Switching Cycle	50,000
Lighting Technology	LED
Flux measurement reference	Sphere
EU RoHS compliant	Yes
Light Technical	
Color Code	840 [CCT of 4000K]
Luminous Flux	485 lumen
Color Designation	Cool White (CW)
Correlated Color Temperature (Nom)	4000 K
Luminous Efficacy (rated) (Nom)	210 lm/W
Color Consistency	<6
Color rendering index (CRI)	80
LLMF At End Of Nominal Lifetime (Nom)	70 %
Flickering value (PstLM)	1

Stroboscopic effect value (SVM)	0.4
Photobiological safety according to EN 62471	RG1
Operating and Electrical	
Line Frequency	50 to 60 Hz
Input Frequency	50 to 60 Hz
Power Consumption	2.3 W
Lamp Current (Nom)	25 mA
Wattage Equivalent	40 W
Starting Time (Nom)	0.5 s
Warm-up time to 60% light	0.5 s
Power Factor (Fraction)	0.4
Voltage (Nom)	220-240 V
Voltage (Nom)	220 V
Temperature	
Ambient temperature range	-20 to +45 °C

# MASTER UltraEfficient LED candles and lusters

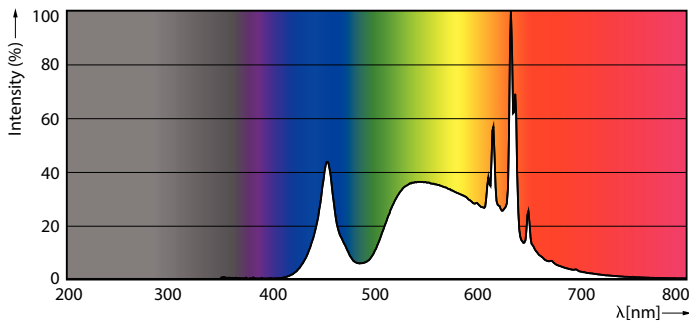
T-Case Maximum (Nom)	70 °C
<b>Controls and Dimming</b>	
Dimmable	No
<b>Mechanical and Housing</b>	
Bulb Finish	Clear
Bulb Material	Glass
Bulb Shape	B35 [B 35mm]
<b>Approval and Application</b>	
Energy Efficiency Class	A
Energy Consumption kWh/1000 h	3 kWh
EPREL Registration Number	1443706
Photobiological risk	Photobiological risk group 1 @ 200mm to EN62471

EyeComfort	Yes
<b>Product Data</b>	
Full product code	872016918895200
Order product name	MAS LEDCandleND2.3-40W E14 840 B35CL GUE
Order code	929003626002
Numerator - Quantity Per Pack	1
Numerator - Packs per outer box	10
Material Nr. (12NC)	929003626002
Full product name	MAS LEDCandleND2.3-40W E14 840 B35CL GUE
EAN/UPC - Case	8720169188969
EAN/UPC - Product/Case	8720169188952

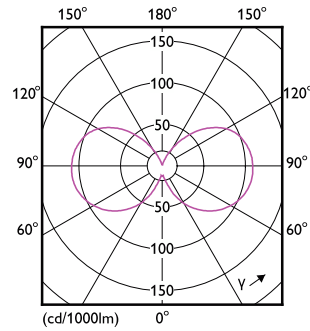
## Dimensional drawing

Product	D	C
MAS LEDCandleND2.3-40W E14 840 B35CL GUE	35 mm	111 mm

## Photometric data



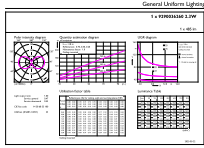
Spectral Power Distribution Colour - MAS LEDCandleND2.3-40W E14 840 B35CL GUE



Light Distribution Diagram - MAS LEDCandleND2.3-40W E14 840 B35CL GUE

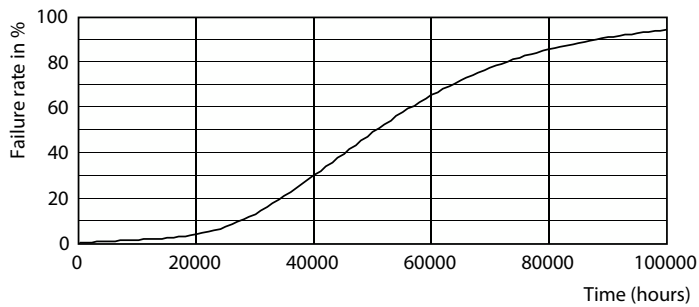
# MASTER UltraEfficient LED candles and lusters

## Photometric data

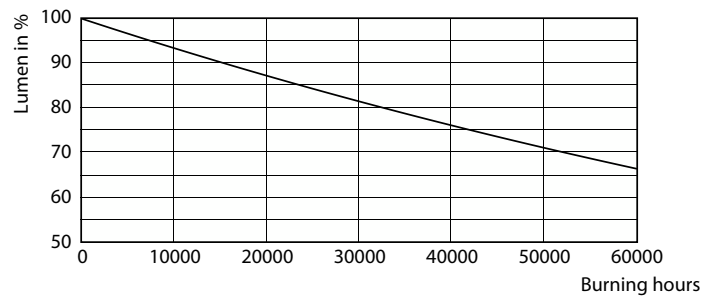


General uniform lighting - MAS LEDCandleND2.3-40W E14 840 B35CL GUE

## Lifetime



Life Expectancy Diagram - MAS LEDCandleND2.3-40W E14 840 B35CL GUE



Lumen Maintenance Diagram - MAS LEDCandleND2.3-40W E14 840 B35CL GUE

