



Illuminated  
selector switch  
2 positions

Illuminated  
button  
spring-return

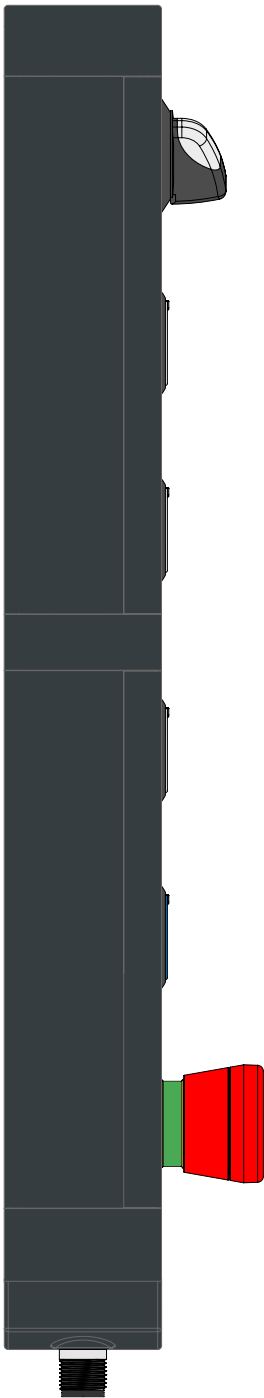
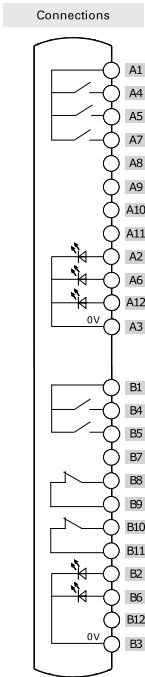
Illuminated  
button  
spring-return

Illuminated  
button  
spring-return

Illuminated  
button  
spring-return

Emergency  
push button

	Contacts	Diagram
Device 1	1NO	A1 — A4 A2 — A3
Device 2	1NO	A1 — A5 A6 — A3
Device 3	1NO	A1 — A7 A12 — A3
Device 4	1NO	B1 — B4 B2 — B3
Device 5	1NO	B1 — B5 B6 — B3
Device 6	2NC	B8 — B9 B10 — B11



Connector

Double M12  
with 12 pole  
at the bottom

