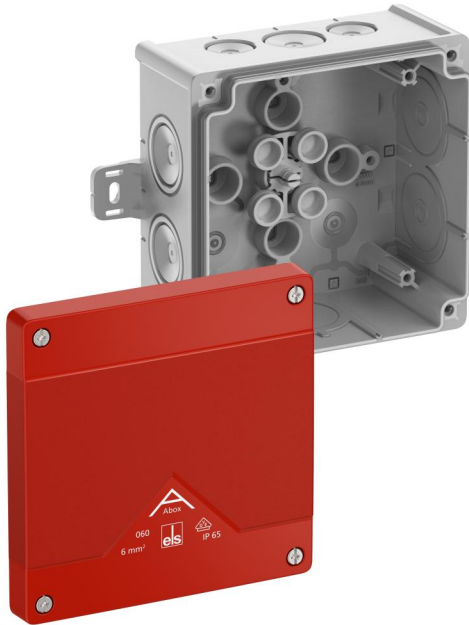


Junction box

Abox 060 AB-L/SB



Abox 060 AB-L/SB

Junction box

Productnumber: 80670101

Dimensions: 127 x 127 x 70 mm

Junction box, protection class IP66, nominal cross-section 6 mm², certified by VDE (DIN EN 60670-1/-22 (VDE 0606-1/-22)), DLG (Ammonia resistance), self-sealing, soft insertion membranes, M20/M25/M32, sealing range 4 - 28 mm, (2 rear, 8 side), external fixing lugs, for standard indoor and protected outdoor installations

grey, Ui=1000 V AC, with red cover, without terminals, for identification of safety lighting circuits



Technical Data

electrical characteristics

Rated insulation voltage AC:	1000 V
Rated insulation voltage DC:	1000 V
Max. conductor cross section:	6 mm ²
Protection class:	II
Type of protection:	IP66
Terminal type:	none

Colours

Base unit colour:	grey
Cover colour:	red

Dimensions

Width:	127 mm
Length:	127 mm
Height:	70 mm
Inner length:	114 mm
Inner width:	114 mm
Inner height:	54 mm
Weight:	0.214 kg

Material characteristics

UV-resistant:	yes
Halogen free:	yes
Flammability class according with UL94:	HB
Glow-wire flammability according to EN 60695-2-11:	750 °C

Max. number of terminals per cross section acc. to DIN VDE 0606-1

max. amount of terminals at 1,5 ² :	14
max. amount of terminals at 2,5 ² :	10

Max. number of terminals per cross section acc. to DIN VDE 0606-1

max. amount of terminals at 4 ² :	8
max. amount of terminals at 6 ² :	5

<p>Max. number of wires per cross section acc. to DIN VDE 0606-1</p>

max. amount of wires at 1,5 ² :	40
max. amount of wires at 2,5 ² :	30
max. amount of wires at 4 ² :	24
max. amount of wires at 10 ² :	15

mechanical properties

for sealing range min:	4 mm
for sealing range max:	28 mm
Impact strength:	IK07
Sealable:	yes
Cover screw torque:	1.2 Nm
Type of fastening:	Wall/ceiling mounting
Fastening:	external fixing lugs

Ambient conditions

max. relative humidity 25°C:	95 %
max. relative humidity 40°C:	50 %
Min. ambient temperature:	-25 °C
Max. ambient temperature:	55 °C
24h ambient temperature:	35 °C
Installation location:	protected outdoor areas

Sales Information

EAN:	4013902660698
Packing Unit Code:	C62
ETIM Class:	EC002600
Custom tariff number:	85389099

Material

Base unit material:	Polypropylene
Cover material:	Polypropylene
Entry material:	Thermoplastic elastomer
Sealing material:	Thermoplastic elastomer
Cover screw material:	Stainless steel V2A

Certificates

Test mark:	VDE (DIN EN 60670-1/-22 (VDE 0606-1/-22))
Test mark:	DLG (Ammonia resistance)

Accessories

- [22742001 - KVR M20-MGM - Cable gland](#)
- [22742101 - KVR M20-GDB/MGM - Cable gland](#)
- [22742501 - KVR M25-MGM - Cable gland](#)
- [22743201 - KVR M32-MGM - Cable gland](#)
- [26042001 - DMS M20 - Double-membrane seals](#)
- [26042501 - DMS M25 - Double-membrane seals](#)
- [26043201 - DMS M32 - Double-membrane seals](#)
- [89500101 - Abox PST 025-100 - Sealing kit](#)
- [89510601 - Abox MPI 060 - Mounting plate](#)
- [89530601 - Abox 060 NS35 - Standard rail](#)
- [89600401 - Abox 060 KH 221 4² - Terminal holder](#)
- [89640601 - Abox 060 KLS-6² - Terminal block](#)
- [89602001 - MABF 100-1 - Mast/pipe fixing set](#)
- [89600901 - KTB 1 - Fastening parts kit](#)

Cable gland

