



# MasterConnect LEDtube EM/mains T8



## MC LEDtube IA 1500mm UO 25W840 T8

Introducing MasterConnect LEDtubes - smart retrofit LED T8 lamps that give you an easy and seamless way to upgrade to connected lighting. Simply set up with an intuitive app and MasterConnect LED tube lighting can be programmed to maximize energy savings, while providing wireless and automated light for your comfort and convenience. What's more, it is fully scalable and upgradable. If you want to enjoy additional benefits such as remote control or a management dashboard, you can simply keep the lamps you currently have installed and add a gateway to experience all the advantages of a cloud-based system. There's no better way to take lighting solutions to the next level.

### Product data

General Information		LLMF At End Of Nominal Lifetime (Nom)	
Cap-Base	G13 [Medium Bi-Pin Fluorescent]		70 %
Nominal lifetime	60,000 hour(s)	Photobiological safety according to EN 62471	RG0
Switching Cycle	200,000		
Lighting Technology	LED	Operating and Electrical	
Flux measurement reference	Sphere	Line Frequency	50 to 60 Hz
		Input Frequency	50 to 60 Hz
		Power Consumption	25 W
		Lamp Current (Max)	117 mA
		Lamp Current (Min)	108 mA
		Starting Time (Nom)	0.5 s
		Warm-up time to 60% light	0.5 s
		Power Factor (Fraction)	0.9
		Voltage (Nom)	220-240 V
		Ballast Compatibility	EM/Mains
		LED alternative to fluorescent lamp power	58 W
		Inrush current at mains	9

# MasterConnect LEDtube EM/mains T8

Max. lamp no. on MCB B type 10A – Mains	73
Max. lamp no. on MCB B type 10A – EM ballast without Compensation Capacitor.	73
Max. lamp no. on MCB B type 10A – EM ballast with Compensation Capacitor.	15
Max. lamp no. on MCB B type 16A – Mains	116
Max. lamp no. on MCB B type 16A – EM ballast without Compensation Capacitor.	116
Max. lamp no. on MCB B type 16A – EM ballast with Compensation Capacitor.	24

## Temperature

T-Case Maximum (Nom)	65 °C
----------------------	-------

## Controls and Dimming

Dimmable	Wireless Dim
----------	--------------

## Mechanical and Housing

Product Length	1,500 mm
Bulb Shape	T8
Net Weight (Piece)	0.450 kg

## Approval and Application

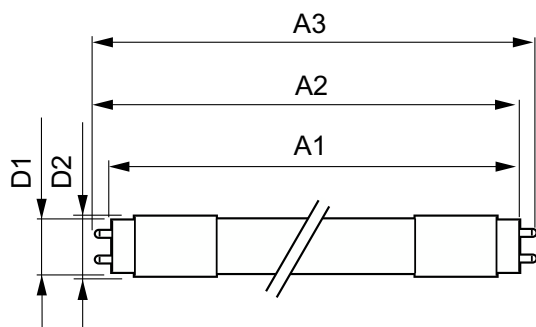
Energy Efficiency Class	D
Energy Saving Product	Yes

Approval Marks	RoHS compliance KEMA Keur certificate
Energy Consumption kWh/1000 h	25 kWh
EPREL Registration Number	406202
CE mark	Yes
EU RoHS compliant	Yes
Flickering value (PstLM) – Flickering value as per EN 61000-3-3	1
Stroboscopic effect visibility measure (SVM)	0.9
Ambient temperature range	-20 °C to 45 °C

## Product Data

Order product name	MC LEDtube IA 1500mm UO 25W840 T8
Full product name	MC LEDtube IA 1500mm UO 25W840 T8
Full product code	871869966976800
Order code	929002210802
Material Nr. (12NC)	929002210802
Numerator - Quantity Per Pack	1
EAN/UPC - Product/Case	8718699669768
Numerator - Packs per outer box	10
EAN/UPC - Case	8718699669775

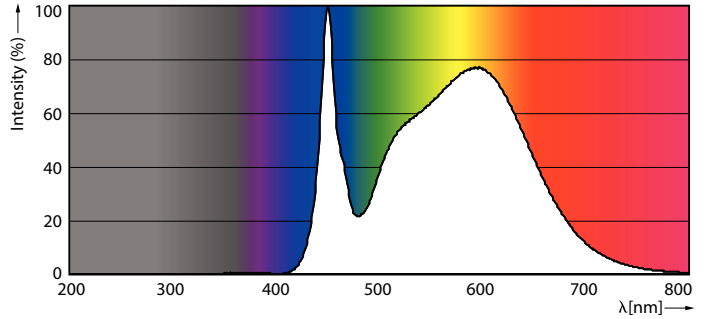
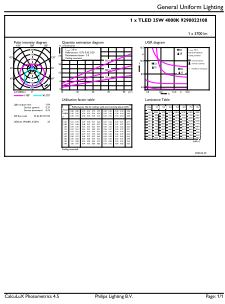
## Dimensional drawing



Product	D1	D2	A1	A2	A3
MC LEDtube IA 1500mm UO 25W840 T8	25.8 mm	28 mm	1,498.7 mm	1,505.8 mm	1,512.9 mm

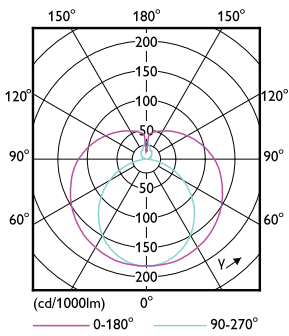
# MasterConnect LEDtube EM/mains T8

## Photometric data



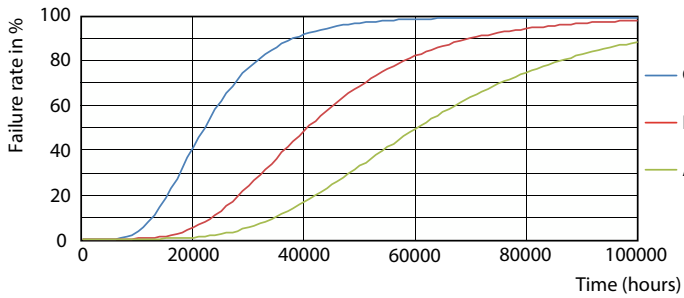
General uniform lighting - MC LEDtube IA 1500mm UO 25W840 T8

Spectral Power Distribution Colour - MC LEDtube IA 1500mm UO 25W840 T8

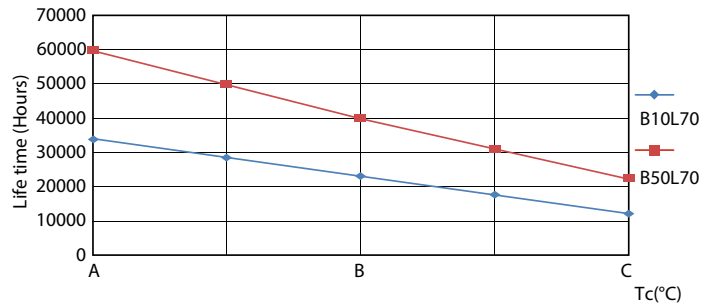


Light Distribution Diagram - MC LEDtube IA 1500mm UO 25W840 T8

## Lifetime



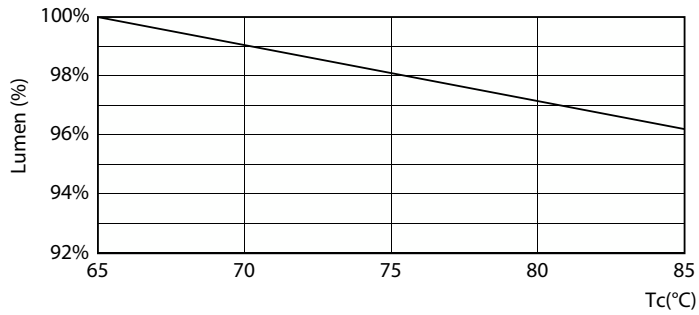
FailureRate



LifetimeVsTc

# MasterConnect LEDtube EM/mains T8

## Lifetime



Lumen Maintenance Diagram - MC LEDtube IA 1500mm UO 25W840 T8

Lumen Maintenance Diagram - MC LEDtube IA 1500mm UO 25W840 T8



Life Expectancy Diagram

