



MASTER LEDtube Mains T5



MAS LEDtube 1200mm HO 26W 865 T5

The new Philips Master LEDtube Mains T5 brings simplicity to your lighting project. You don't need to pay attention to the driver technology anymore. Thanks to a unique design, Philips MASTER LEDtube Mains T5 installs in luminaires operating on mains power connection. So simple to operate! . Perfectly safe, reliable & easy to install Philips MASTER LEDtube Mains T5 is the ideal alternative to standard fluorescent tubes to maximize value over lifetime with high energy saving and lower maintenance costs.

Product data

General Information		Photobiological safety according to EN 62471	
Cap-Base	G5		RG0
Nominal lifetime	50,000 hour(s)	Operating and Electrical	
Switching Cycle	200,000	Line Frequency	50 to 60 Hz
Lighting Technology	LED	Input Frequency	50 to 60 Hz
Flux measurement reference	Sphere	Power Consumption	26 W
Light Technical		Lamp Current (Nom)	125 mA
Color Code	865 [CCT of 6500K]	Starting Time (Nom)	0.5 s
Beam Angle (Nom)	200 degree(s)	Warm-up time to 60% light	0.5 s
Luminous Flux	3,900 lm	Power Factor (Fraction)	0.92
Color Designation	Cool Daylight	Voltage (Nom)	220-240 V
Correlated Color Temperature (Nom)	6500 K	Ballast Compatibility	Mains
Luminous Efficacy (rated) (Nom)	150 lm/W	LED alternative to fluorescent lamp power	54 W
Color Consistency	<6	Inrush current at mains	20
Color rendering index (CRI)	80	Max. lamp no. on MCB B type 10A - Mains	31
LLMF At End Of Nominal Lifetime (Nom)	70 %	Max. lamp no. on MCB B type 10A – EM ballast without Compensation Capacitor.	-

MASTER LEDtube Mains T5

Max. lamp no. on MCB B type 10A – EM ballast with Compensation Capacitor.	-
Max. lamp no. on MCB B type 16A – Mains	50
Max. lamp no. on MCB B type 16A – EM ballast without Compensation Capacitor.	-
Max. lamp no. on MCB B type 16A – EM ballast with Compensation Capacitor.	-

Temperature

T-Case Maximum (Nom)	65 °C
----------------------	-------

Controls and Dimming

Dimmable	No
----------	----

Mechanical and Housing

Bulb Finish	Frosted
Bulb Material	Glass
Product Length	1,200 mm
Bulb Shape	T5
Net Weight (Piece)	0.215 kg

Approval and Application

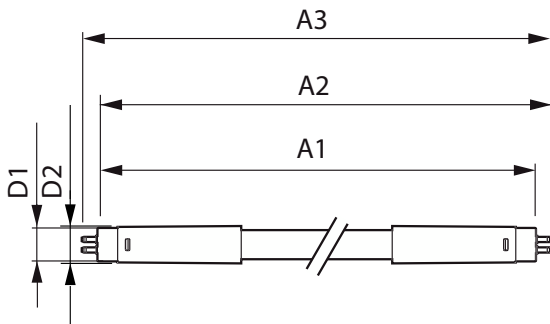
Energy Efficiency Class	D
Energy Saving Product	Yes

Approval Marks	RoHS compliance
Energy Consumption kWh/1000 h	26 kWh
EPREL Registration Number	1476414
CE mark	Yes
EU RoHS compliant	Yes
Flickering value (PstLM) – Flickering value as per EN 61000-3-3	1
Stroboscopic effect visibility measure (SVM)	0.4
Ambient temperature range	-20 to +45 °C

Product Data

Order product name	MAS LEDtube 1200mm HO 26W 865 T5
Full product name	MAS LEDtube 1200mm HO 26W 865 T5
Full product code	871869681925800
Order code	929001908702
Material Nr. (12NC)	929001908702
Numerator - Quantity Per Pack	1
EAN/UPC - Product/Case	8718696819258
Numerator - Packs per outer box	10
EAN/UPC - Case	8718696819265

Dimensional drawing



Product	D1	D2	A1	A2	A3
MAS LEDtube 1200mm HO 26W 865 T5	15.5 mm	17.1 mm	1,149 mm	1,156 mm	1,163 mm

MASTER LEDtube Mains T5

Lifetime



Lumen Maintenance Diagram - MAS LEDtube 1200mm HO 26W 865 T5

Lumen Maintenance Diagram - MAS LEDtube 1200mm HO 26W 865 T5



FailureRate

